

# Embroidered Stories: Creature Quest



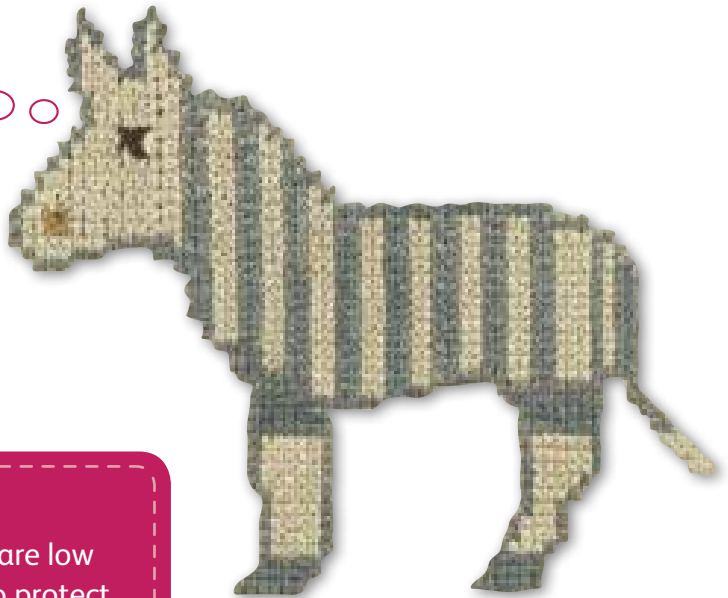
National  
Museum of  
Scotland

Discover the mammals, reptiles, insects and birds in the *Embroidered Stories: Scottish Samplers* exhibition by questing from creature to creature.

Dating from the early 18th to mid-19th century, samplers are embroidered designs made by young girls (and sometimes boys) as part of their education. These Scottish samplers include lots of different pictures and symbols that can tell us about their lives.

What kind of animal am I?

\_\_\_\_\_



## Good to know!

The lighting levels are low in this exhibition to protect the textiles. It is a quiet space but there is a film on the right as you enter that makes a little noise.



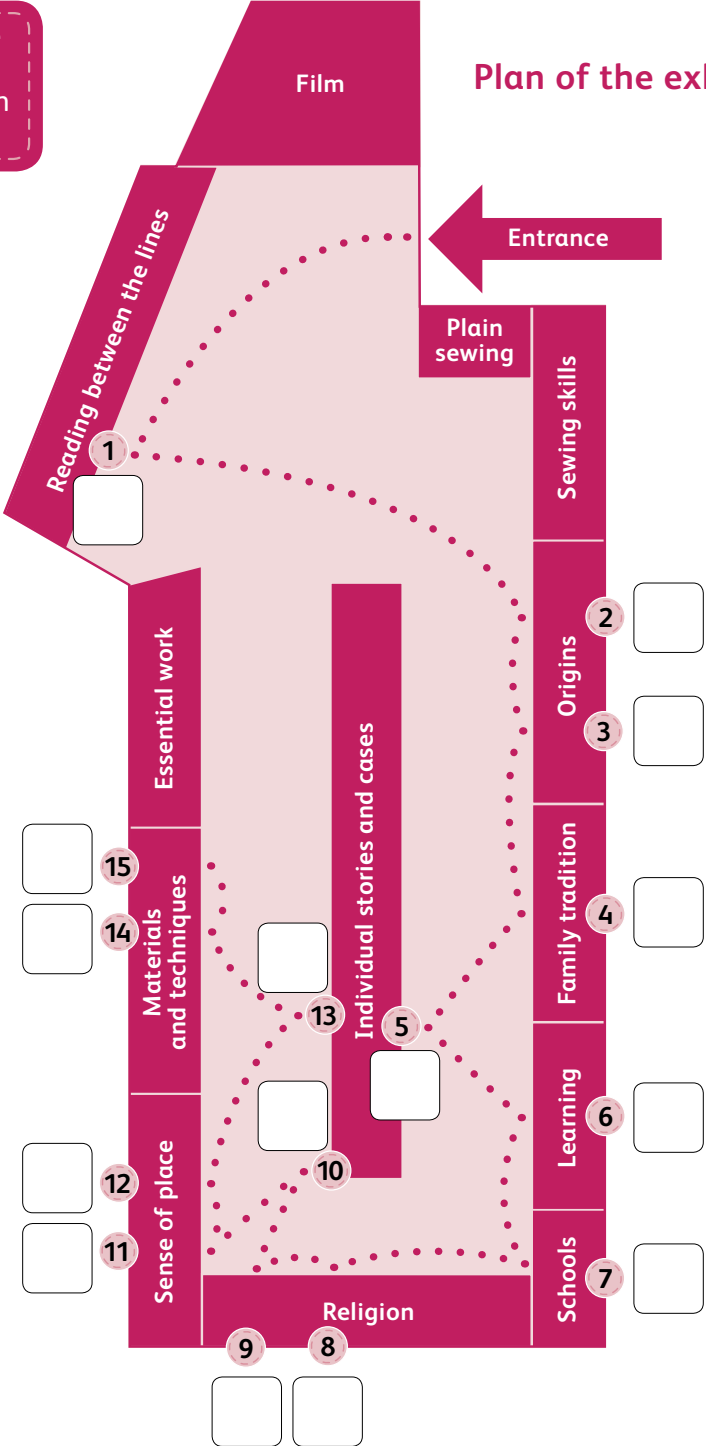
Turn the page to  
find more creatures...



1

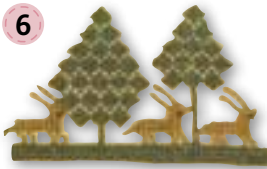
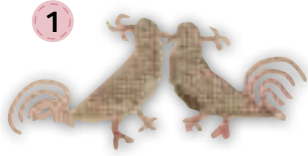
Find the animals shown on page 3

# Plan of the exhibition



# Animal Hide & Seek

As you go around the exhibition, see if you can find these animals and tick the boxes on page 2 when you have found each one.



Well done for completing this quest, turn the page for another challenge...

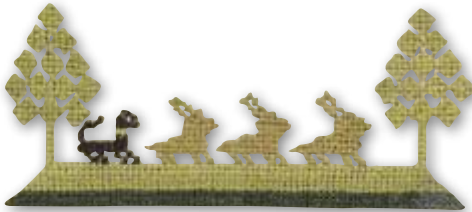


# Dogs and Rabbits in the Woods

This is a design found in Origins. What do you think is happening?



Can you find these examples in the exhibition?  
Who made them and in what year?



Maker \_\_\_\_\_

Year \_\_\_\_\_



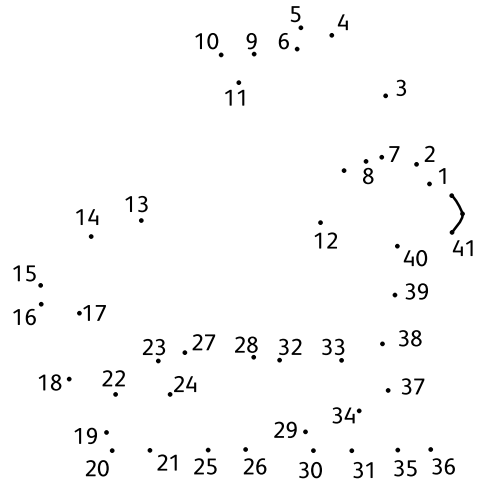
Maker \_\_\_\_\_

Year \_\_\_\_\_



Maker \_\_\_\_\_

Year \_\_\_\_\_



Can you join the dots?  
What is the animal?

\_\_\_\_\_

# Animal Count

Find these samplers and count the animals in them.  
Which one has the most?



Number of animals: \_\_\_\_\_



Number of animals: \_\_\_\_\_



## Peacock Spotting

Peacocks are often found in Scottish samplers. How many can you spot? Tick the box when you have found each one.



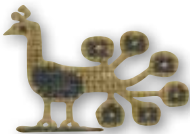
In Essential work



In individual stories and cases



In Origins



In Sewing skills



In Essential work

## Birds Galore

How many other birds can you spot? List or draw a few below and list their colours.

## Little Shepherds and Dogs

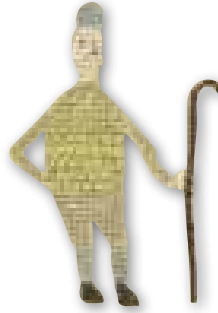
Can you find these 4 Shepherds hiding across the exhibition?  
What colours are their dogs?



In Essential work



In Materials  
and techniques



In Sense of place



In Religion

Which shepherd is your favourite and why?

---

---

---

---

---

---

---

---

### Fab Fact:

Two of the shepherds are wearing a traditional shepherds plaid. These were woven locally from the wool of the sheep they looked after.

**Congratulations!** You've completed the quest!  
Would you like to design your own sampler? Turn the page...



## Design your Own Sampler

Draw little crosses on the grid below to create your design.  
We have provided a small example to show you how to do this.

You could include your house or school, letters from the alphabet, trees, flowers, animals, patterns or shapes – we can't wait to see what you create!

