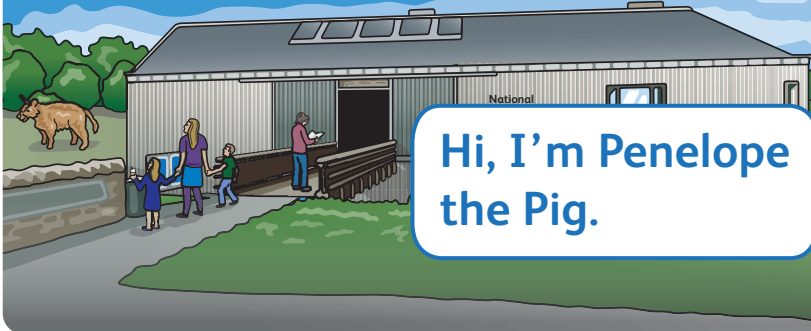




National
Museum of Rural Life
Scotland



Hi, I'm Penelope
the Pig.



Penelope's trotter trail

Head to the picture gallery

Animal portraits like this were
very popular.

Discuss in pairs about why you think that was!

How life like are they?

When were they painted?

Could they have used cameras instead?

Head to the Land gallery

Find the model of the farm in
the 1700s.

Discuss in pairs about how you think the farm
has changed in 300 years.



Wheat needed to be resistant to _____

and _____

Discuss in pairs about why you think it's
important for crops to be resistant to
these things.

Head to the People gallery

Find the school mistress.
She was an important figurehead
in rural communities.

If she cycled 12 miles an hour and the school
is 6 miles away, how long would it take her to
get there?

2 hours 7 hours 30 minutes

Head to the Tools gallery

Look up! Find the Breck of
Rendall Mill.

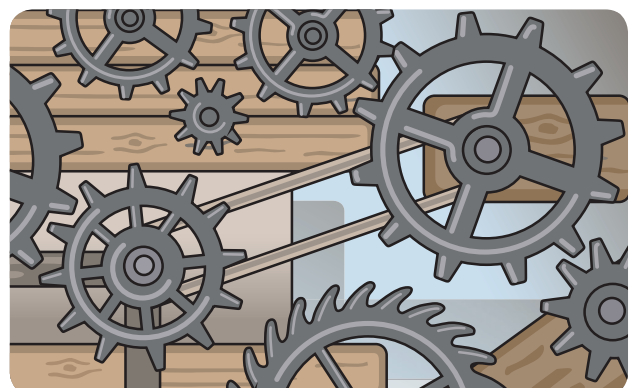
This is a _____

powered machine, used to separate

_____ from straw.

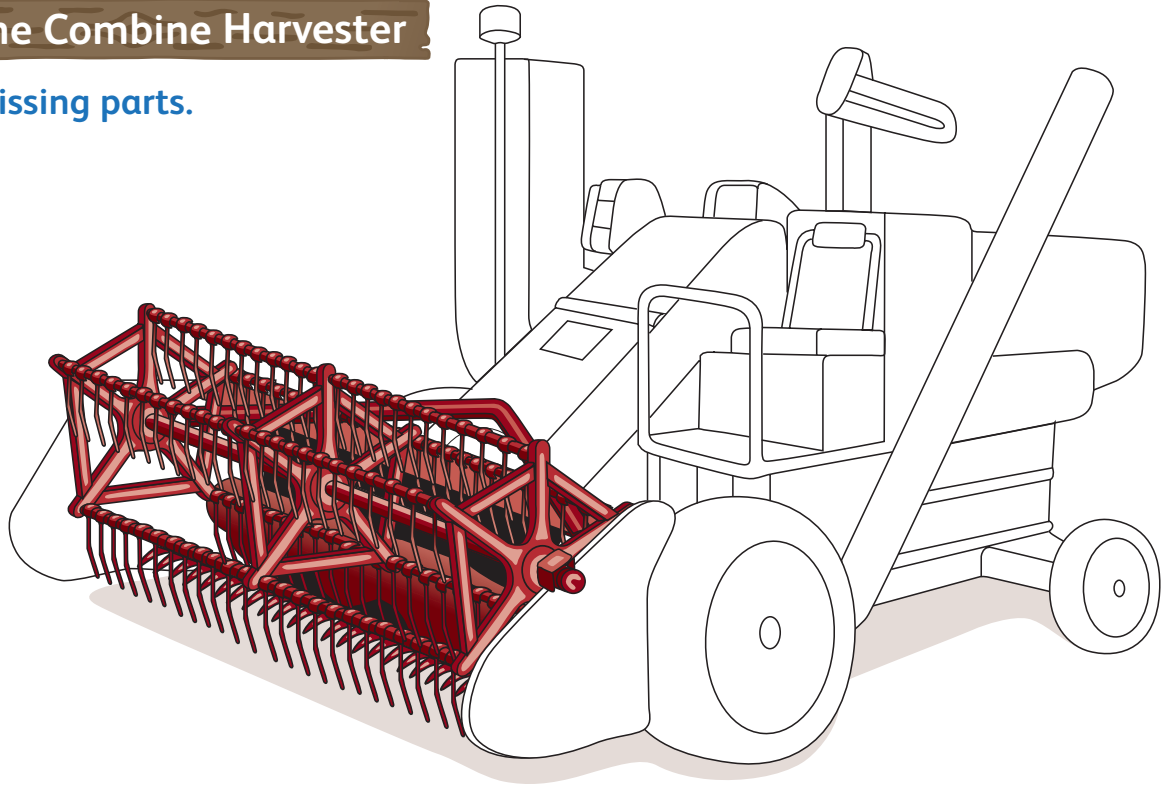
This process is called _____

and used to be done by hand.



Head to the Combine Harvester

Fill in the missing parts.



Head to the Tractor store

Find the grey tractor with unusual wheels.

Discuss in pairs about why that might be.
Can you find out why?

Design your own tractor for all the jobs you can think of on the farm.

What does your tractor need?

Keep an eye out for our Tamworth pigs!

How many pigs can you see?
How many piglets can you spot?
Do they look different to how you expected?
Why is that?

