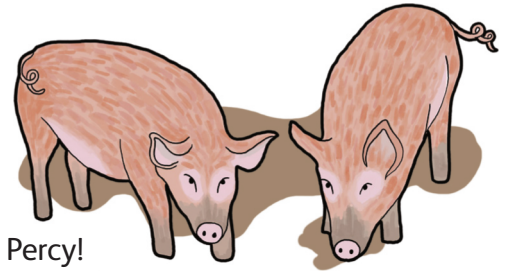


Today you will meet lots of animals that live on the farm.

Let's start with the pigs.

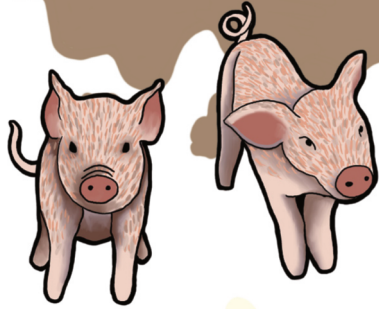
Fun fact – female pigs are called sows and male pigs are called boars.



Our boar is called Percy!

Can you find him and count how many tusks he has?

Percy has tusks!

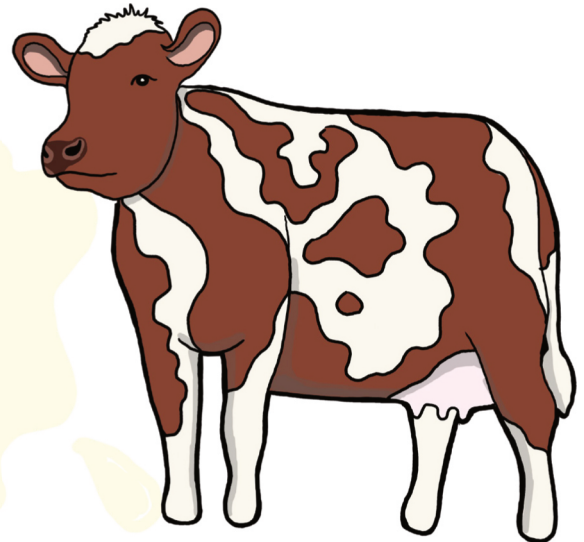
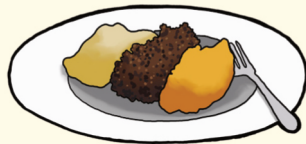


Take a peek at our piglets and their tails, they are in the pigsty behind the toilet block. Piglets can have different types of tails, from curly to straight.

Can you spot the dairy cows?

We have two types of dairy cows on the farm. They are *Ayrshire* and *Jersey*. Their milk is extra creamy.

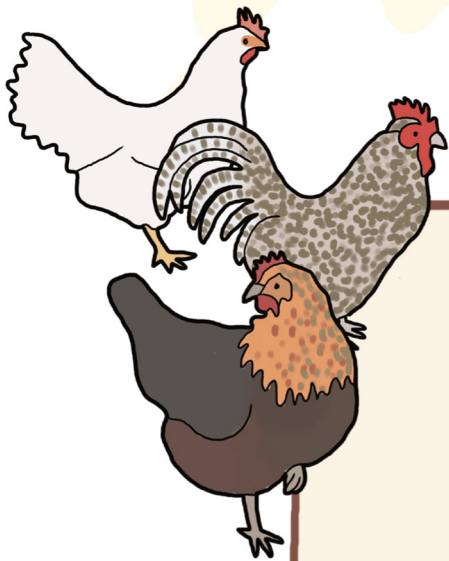
Can you circle the foods that are made from milk?



Now to the chickens.

We have three types of chicken called *Scots Dumpy*, *White Leghorn* and *Black Rocks*.

Draw the chickens in their hen houses



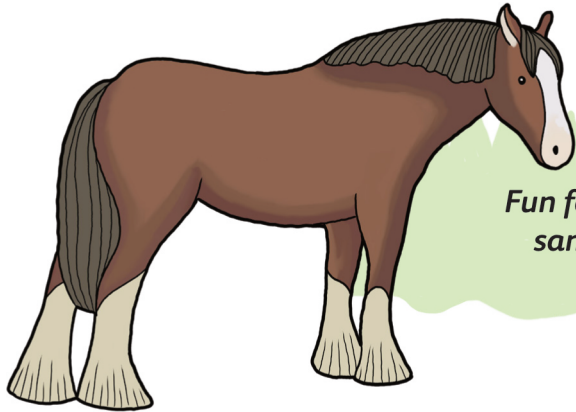
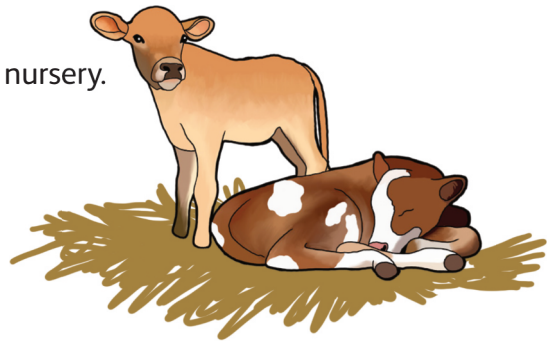
Fun fact - the farmer can tell which chicken laid which egg - the shell is the same colour as their ears!

Let's head up to the calves.

The calves are in the Small Byre, which is like the baby room in a nursery. Remember to be quiet, they might be sleeping.

Now to see our horses.

Our horses are Clydedale horses – they have hairy hooves!

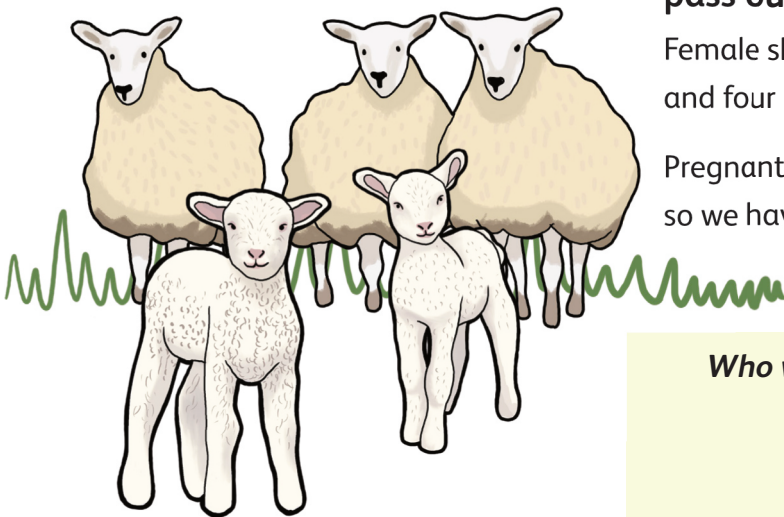


Fun fact – the legs of a foal (young horse) are the same length as they will be as an adult horse.

As you head back to the museum, you will pass our sheep.

Female sheep are pregnant for four months, four weeks and four days. They give birth to lambs.

Pregnant sheep usually give birth to twins and triplets, so we have lots of lambs in Spring time.



Can you match the adult with their baby?

foal	cow
piglet	sheep
calf	pig
lamb	horse

Who will you find when you join the dots?

