

Beyond the Little Black Dress

1 July–29 October 2023

Visual Guide



Image © David Eustace. Dress by Gareth Pugh, A/W 2013

National Museum of Scotland

Chambers Street

Edinburgh

EH1 1JF

This visual guide is designed to support a visit to the exhibition *Beyond the Little Black Dress* at the National Museum of Scotland.

Contents

Visiting the National Museum of Scotland.....	3
Tickets.....	3
Visiting the exhibition.....	4
General information	5
Notes on the exhibition.....	5
Relaxed Viewings of <i>Beyond the Little Black Dress</i>	5
Getting to the exhibition.....	6
Toilets.....	6
A visual walk through the exhibition	7
Exhibition exit and shop	10
Contact us	14

Visiting the National Museum of Scotland

There are two entrances to the National Museum of Scotland.



The Main Entrance



The Tower Entrance

The Tower Entrance is usually quieter and offers step-free access to the museum.

Please visit our 'Plan Your Visit' webpage: <https://www.nms.ac.uk/national-museum-of-scotland/plan-your-visit/> for more information about getting to the museum, facilities, and accessible parking. You can also download a [map of the museum](#).

Guide dogs and assistance animals are welcome in all areas of the museum.

General visual stories are available to support your visit:

[Main entrance visual story](#)

[Tower Entrance visual story](#)

To find out more about accessibility at the museum please visit:

<https://www.nms.ac.uk/national-museum-of-scotland/plan-your-visit/accessibility/>

Tickets

A general visit to the museum is free and no booking is required. However, to visit the ***Beyond the Little Black Dress*** exhibition you will have to buy a ticket.

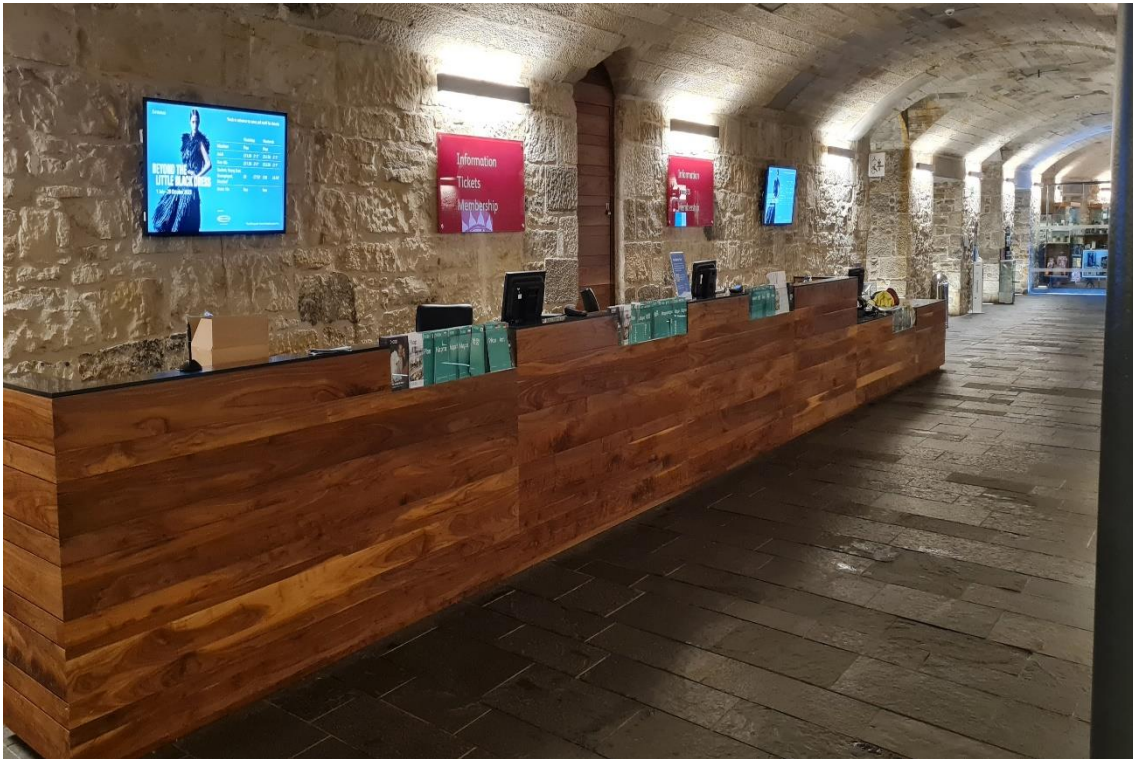
Tickets can be purchased online ([click to visit the booking page](#)) or purchased at either the Main Entrance Information Desk or outside the exhibition on Level 3 subject to availability. Tickets are cheaper when purchased in advance of your visit (up to 24 hours before visiting). **We recommend booking in advance to avoid disappointment.**

If you need any help with booking tickets, please call 0300 123 6789 (10:00-17:00).

To find out about ticket pricing please visit our website:

<https://www.nms.ac.uk/exhibitions-events/exhibitions/national-museum-of-scotland/beyond-the-little-black-dress/>

When you arrive at the museum, there are information desks at both entrances. If you would like to pick up a map or if you have any questions, our Visitor Experience staff can help you. Please note tickets for the exhibition are only available at the Main Entrance Information Desk picture below.



Our visitor experience staff wear purple shirts and lanyards and are available throughout the museum.



staff

A limited number of sensory maps of the museum and sensory backpacks are available to borrow for free from the information desks.

Visiting the exhibition

General information

Featuring over 60 garments, the exhibition charts a century of fashion through a series of themed, immersive displays. See early 20th century pieces by Chanel, Dior and Jean Muir alongside contemporary looks by designers such as Gareth Pugh, Simone Rocha, Comme des Garçons and ground-breaking Black British designers like Joe Casely-Hayford and Maximilian.

Notes on the exhibition

- Photography is encouraged but flash is not allowed. Filming is not permitted.
- Due to the open display of a number of the exhibits please do not bring tripods or selfie sticks into the exhibition.
- No eating or drinking in the exhibition.
- Some objects are not in display cases – in order to keep them safe, please do not touch them.
- There are two types of seating available in the exhibition – wooden benches and black metal seats with arms and a back. Portable foldable stools are also available at the exhibition entrance.
- Large print guides are available in a holder through the entrance door to the left.
- Light levels are low in the exhibition.
- The floors are dark grey and reflect the lights and the displays.

Relaxed Viewings of *Beyond the Little Black Dress*

Relaxed viewings of *Beyond the Little Black Dress* will be held at the following dates/times:

Sunday 6 August 2023, 10:00–12:00

Sunday 3 September 2023, 10:00–12:00

Tuesday 26 September 2023, 17:30-19:00

Sunday 1 October 2023, 10:00–12:00

During these times the following adaptations to the exhibition will be made:

- Visitor numbers will be reduced
- Video sounds will be turned off

Getting to the exhibition

Beyond the Little Black Dress is in Special Exhibition Gallery 1 on Level 3 of the museum. Level 3 is accessible via a lift, an escalator, or stairs.



The entrance to the exhibition is on **Level 3**. Here you will be greeted by museum staff who will scan your ticket.

If you do not have a ticket you can buy one at the exhibition ticket desk if available.

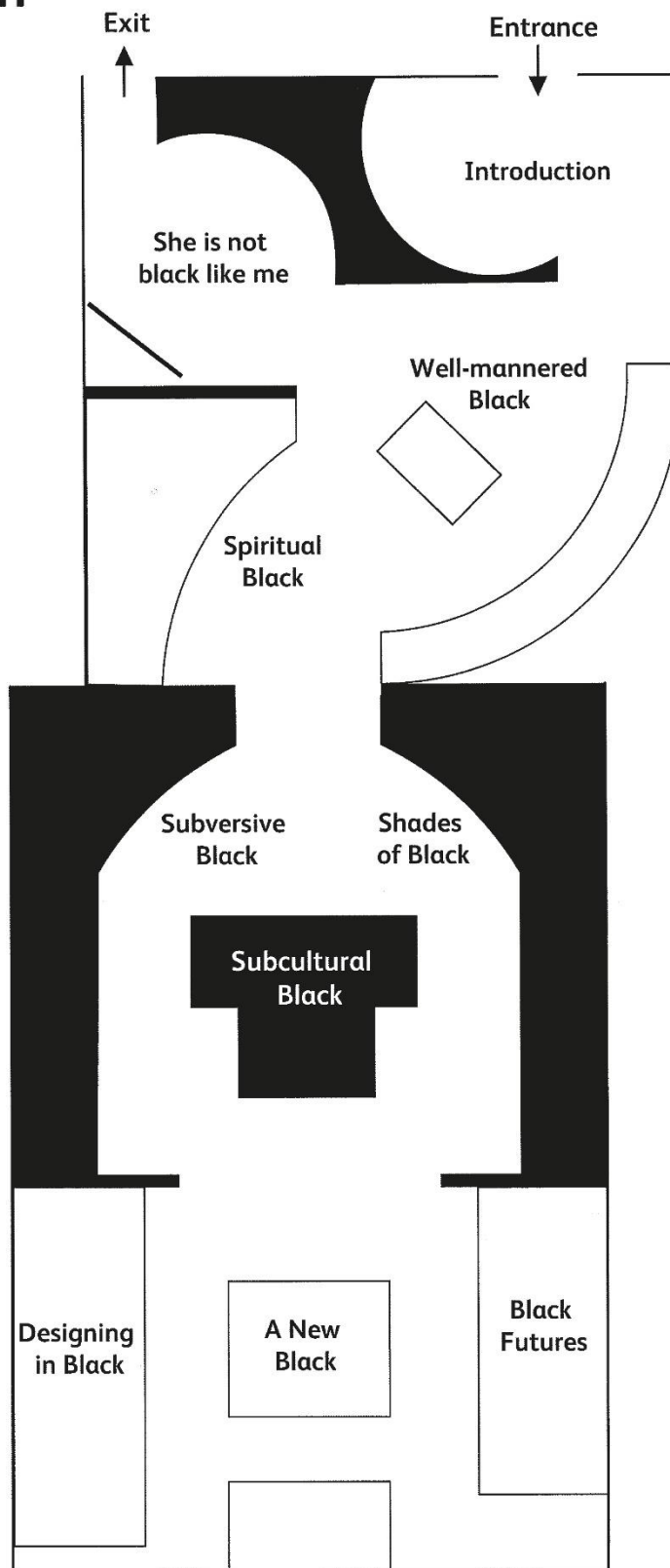


Toilets

The nearest toilets (including an accessible toilet) to the exhibition are on **Level 3** through the *Making and Creating* gallery. There is a Changing Places (U) toilet available in the Level 0 Entrance Hall. It is opened with a RADAR key. One is available at the information desk next to the toilet entrance if you do not have your own. Toilets and accessible toilets are available on every level of the museum.

Exhibition Map

Gallery plan



A visual walk through the exhibition

Introduction: on the right



On the left: This video is in black and white with text, images and a white swirling effect but no sound.



The **'Well Mannered Black'** section has a light background. There is a soundtrack in this area which sounds like a cocktail party with jazz music.



'Shades of Black' has a dark background and ankle height plinths with lights underneath. There is a video in this area which is 13 minutes long and runs on a loop with rhythmic, percussion sounds.



Opposite, in **'Subversive Black'**, there are red neon lights along the wall as well as ankle-height plinths with lights underneath.



There is a wooden bench in between the central sections, **'Subcultural Black'** and **'A New Black'**, if you need a seat.



'Designing in Black' to the right of this picture has a soundtrack of a dressmaking workshop.

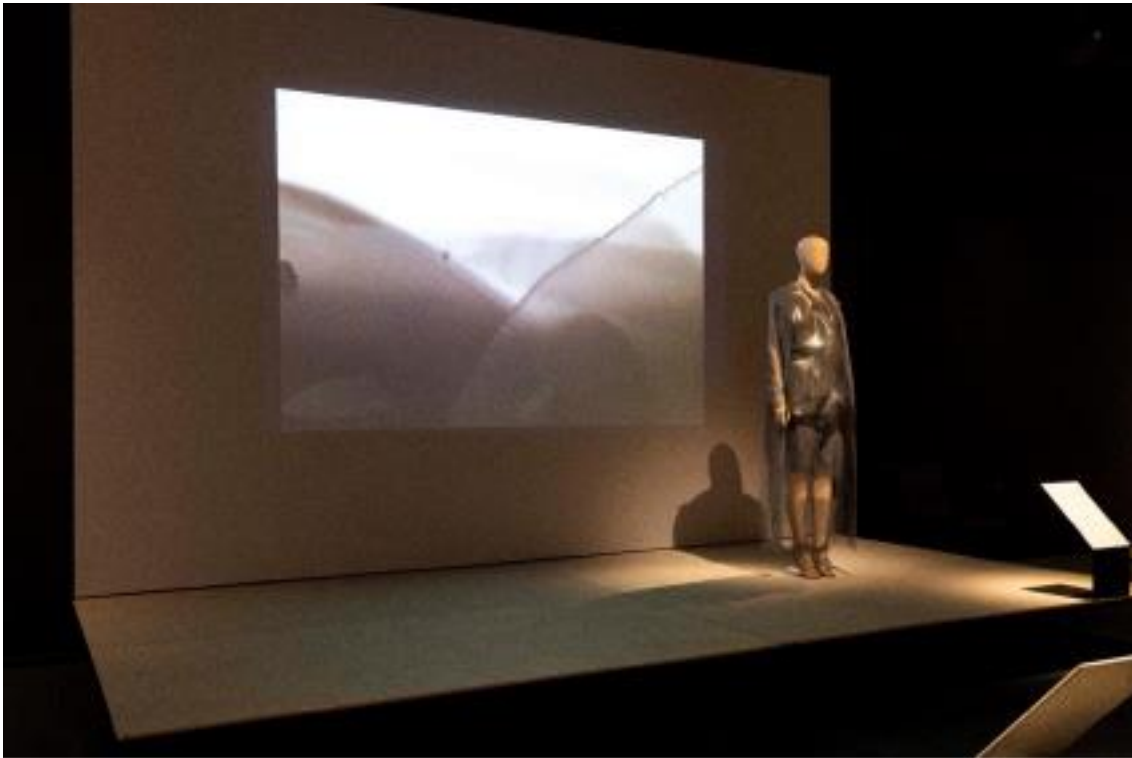
There are two touchscreens in 'A New Black' providing more information. They have headphones.



In 'A New Black' the CuteCircuit dress features a range of different moving LED light effects.



On the back wall this one minute long video plays on a loop with a music soundtrack. The Ying Gao dress in this picture is robotic. For 15 minutes on the hour (i.e. 11:00, 12:00 etc.) this dress will be switched on and move with a rippling effect and a whirring sound when visitors are near it.



Opposite 'Designing in Black' is '**Black Futures**'. On the backdrop there are screens with moving images of stars.



Before the exit is the final section: **'She is not black like me...'**. Here there is a video titled *Her Dreams are Bigger* by Osman Yousfzada. This includes interviews with different people and runs for about five minutes on a continuous loop.

If you would like to avoid this area you can leave through the entrance instead.



Exhibition exit and shop

You will exit the exhibition through this door.



The Exhibition Shop is opposite the exit.



We hope you enjoy your visit.

Contact us

If you require any further information about the museum or the exhibition please use the following contact details:

Email: communities@nms.ac.uk

Call: 0300 123 6789 (Monday-Friday, 10:00-17:00)

Or visit our website www.nms.ac.uk