

# Explore the museum

With thousands of amazing objects across dozens of galleries, a lively programme of events, regularly changing exhibitions and great places to eat and relax, the museum offers you a world of discovery on every floor.

## Key

- |  |                                     |  |                         |
|--|-------------------------------------|--|-------------------------|
|  | Information desk                    |  | Shop                    |
|  | Tickets/ Membership                 |  | Balcony Café            |
|  | Toilets, female                     |  | Museum Kitchen          |
|  | Toilets, male                       |  | Lunch space             |
|  | Toilet, accessible                  |  | Natural World           |
|  | Changing Places toilet (undersized) |  | World Cultures          |
|  | Baby changing                       |  | Collecting Stories      |
|  | Stairs                              |  | Art, Design and Fashion |
|  | Lifts                               |  | Science and Technology  |
|  | Escalator                           |  | Scotland                |
|  | Spiral staircase                    |  | Temporary exhibitions   |
|  | Level access                        |  | Roof Terrace            |
|  | Lockers                             |  | Learning Centre         |
|  | For families                        |  | Research Library        |
|  | Meeting point                       |  |                         |

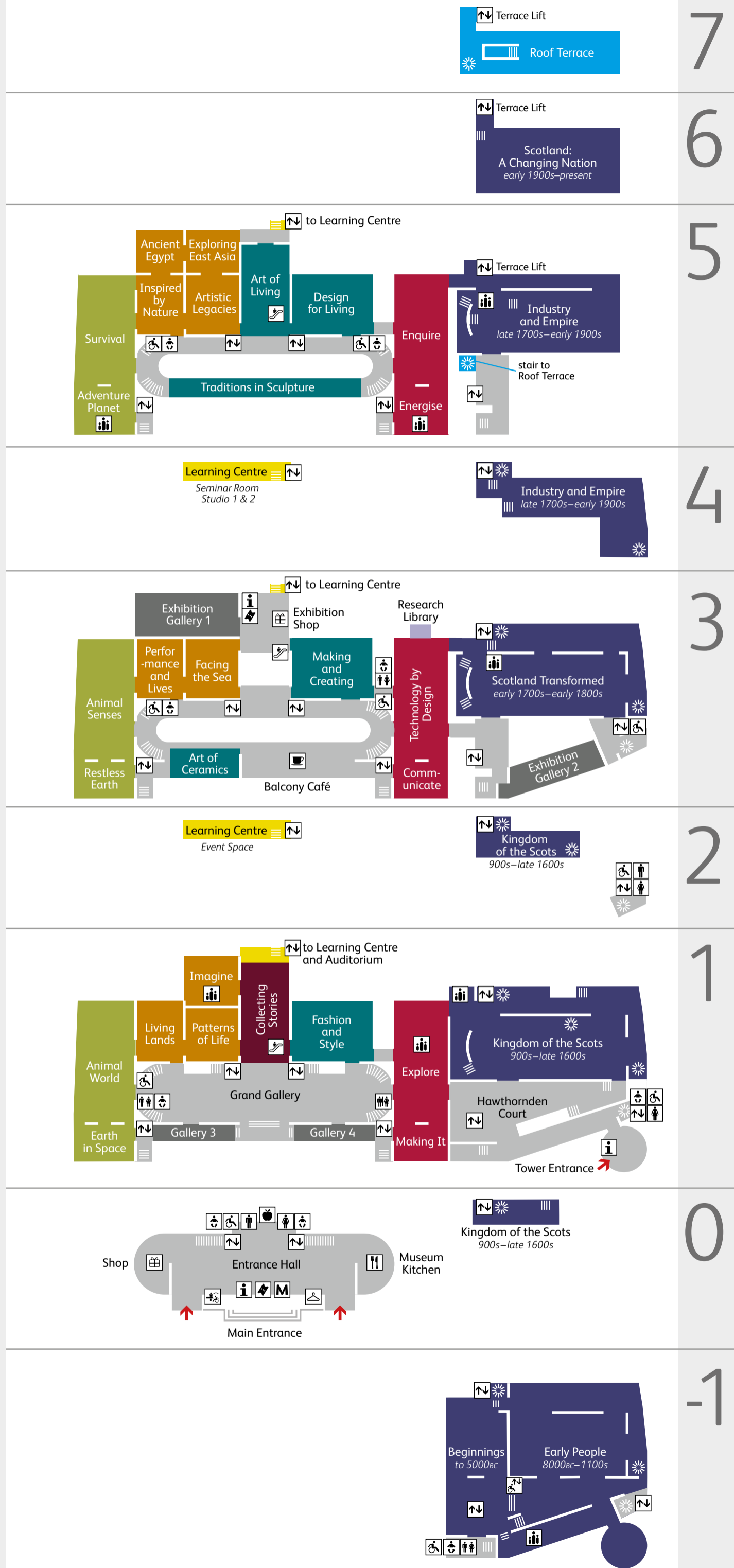
**Please recycle.** If you have finished with this map please return it to an information desk.

June 2023

# Map

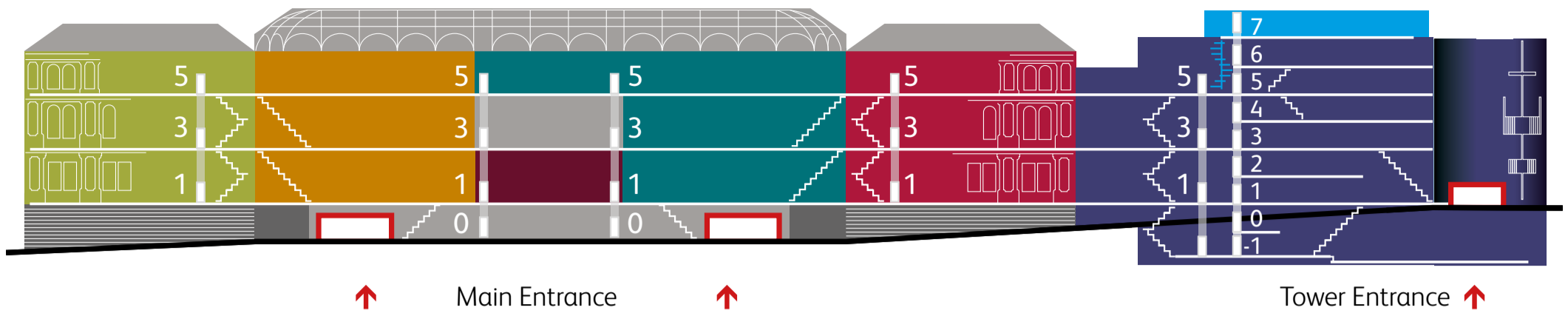


Window on the World  
Grand Gallery  
Level 0-5





# Discover the collections



## Natural World

Our much-loved Tyrannosaurus rex guards the entrance to a stunning series of galleries about our precious planet. Here we ask the big questions such as how the world works, what we know about it, and what our place is in the universe.



**Tyrannosaurus rex**  
Animal World, Level 1

## Art, Design and Fashion

These sumptuous galleries showcase the best of decorative art, design, fashion and style. Discover a treasure trove of creativity, explore the influence of design on everyday life and see how contemporary makers continue to innovate.



**18th century court mantua**  
Fashion and Style, Level 1

## Roof Terrace

Make your way up to the Roof Terrace (Level 7) for an unforgettable view of the Edinburgh skyline. Open 10:00–16:45, access is via the stairs from the *Industry and Empire* gallery (Level 5) or via the Terrace lift.

## Scotland

Starting on Level -1, our Scotland galleries take you from the Palaeolithic era to the present day, from the earliest cultures to space age science, prehistory to pop culture. Come face-to-face with iconic historic artefacts, learn how Scottish innovation has helped shape the modern world, and see how the lives of everyday Scots have changed through the centuries.



**Lewis chess pieces**  
Kingdom of the Scots, Level 1

## World Cultures

Encounter diverse peoples and cultures and discover how we differ and what we all share. The objects and displays are from some of our oldest collections and reveal the links between Scotland and the world.



**Gilded mummy mask**  
Ancient Egypt Rediscovered, Level 5

## Science and Technology

Communications, transport, industry, engineering, energy and medicine: how have scientific and technological inventions changed our lives? Explore the history of innovation in Scotland and across the world through interactive games and thought-provoking displays.



**Dolly the sheep**  
Explore, Level 1

**The Mary, Queen of Scots casket**  
Kingdom of the Scots, Level 1



## Collecting Stories

Explore the development of the National Collection, to learn how and why we have acquired and collected objects over the past 200 years, and continue to do so today.

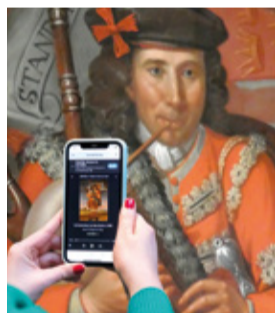


**Millennium Clock**  
Collecting Stories, Level 1

## Highlights tour

Explore our galleries and learn more about the highlight objects shown here, plus other must-see exhibits, with our free Smartify audio tour on your smartphone at [smartify.org](http://smartify.org)

SMARTIFY



# Make the most of your visit

## Here to help



Our **Visitor Experience team** are here to help with more information or directions during your visit.

## Shopping and eating



Relax at our **Balcony Café** (Level 3) or **Museum Kitchen** (Level 0) for coffee and cake or a light meal.

Browse our museum **shops** (Levels 0, 1 and 3) or shop online at [nms.ac.uk/shop](http://nms.ac.uk/shop)

Our **lunch space** (Level 0) is available for picnics when not in use by schools or other large groups. Just ask the Visitor Experience team during your visit.

**Please do not eat or drink in the museum galleries**

## For families



Family-focused interactive galleries and areas are highlighted on the map. Find out more about family visits at [nms.ac.uk/familyhub](http://nms.ac.uk/familyhub)

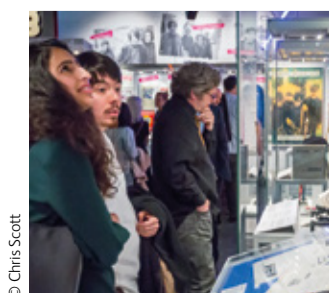
## Access

There are lifts to all floors, adapted toilets, and a Changing Places toilet – see the map for locations, or ask a member of our team. Wheelchairs are available for loan from the information desks.

Induction loops are in place at the information desks and in the Auditorium.

Registered and identifiable assistance dogs are welcome.

## Today's exhibitions, events and trails



Scan the QR code for what's on today:



## Support Scotland's National Museums

As a charity, we rely on your donations to care for Scotland's treasures and bring their stories to life.

Donate online at [nms.ac.uk/supportus](http://nms.ac.uk/supportus) or at a donation point in the museum. Thank you.

National Museums Scotland,  
Scottish Charity SC011130

