



Painted wooden stela of an unknown woman, excavated by Alexander Henry Rhind © National Museums Scotland

Ancient Egyptian Collections in Scottish Museums Edinburgh and Lothians



National
Museums
Scotland



Esmée
Fairbairn
Collections
Fund

Scottish Ancient Egyptian Collections Review

Museum of Childhood, Museums & Galleries Edinburgh, City of Edinburgh Council

RECOGNISED COLLECTION OF NATIONAL SIGNIFICANCE TO SCOTLAND

Contact Susan Gardner Susan.Gardner@edinburgh.gov.uk
Lyn Stevens Lyn.Stevens@edinburgh.gov.uk
General enquiries museumsandgalleries@edinburgh.gov.uk

Location of Collections

On display

Museum of Childhood
42 High St
Edinburgh
EH1 1TG

Size of collections

<5 objects

Published Information

Online Collections: Not currently online

Collection Highlights

- Two Middle Kingdom wooden tomb models (c.2055–1650 BC).

Collection Overview

Museums & Galleries Edinburgh cares for over 220,000 objects in a wide range of collections, including social history, literature, childhood, archaeology and fine and applied art. Many of these are recognised by the Scottish Government as being of national significance. These collections are on display across a number of venues, with the remainder stored at their Museums Collection Centre. They are also responsible for the care and conservation of the City's estate of monuments, memorials and statues.

The known Egyptian objects in the collection are currently on display in the Museum of Childhood, forming part of a display on dolls and figurines from different cultures. The Egyptian objects are part of the collection of Edward Lovett (1852–1933), a Croydon-based collector determined to track the 'Scientific history of the doll, from the standpoints of ethnography and folk-lore'. The objects are on long-term loan from the National Museum of Wales, where Lovett held a large exhibition focusing on dolls in 1914. The most notable of these objects are the two Middle Kingdom wooden funerary figures: a seated male worker (likely a rower) and a nude female offering bearer. Although these are comparable to dolls in

appearance, they were placed in burials of wealthy Egyptians to ensure their status and comfort in the afterlife.

Known Donors and Sites Represented

Sites

<i>Site</i>	<i>Excavator/season</i>	<i>No of Objects</i>	<i>Objects</i>
Unknown/unidentified			

Donors

<i>Donor</i>	<i>Category</i>	<i>No of Objects</i>	<i>Objects</i>
Edward Lovett (1852-1933) (Permanent loan via National Museum of Wales)	Academic/collector	5	Shabtis, funerary figures

Object types

Shabti; funerary figure

Scottish Ancient Egyptian Collections Review

Anatomical Museum, University of Edinburgh

Contact Malcolm MacCallum Malcolm.MacCallum@ed.ac.uk

Location of Collections

In storage

Doorway 3
Medical School
Teviot Place
Edinburgh
EH8 9AG.

Size of collections

<50 objects

Published Information

Online Collections: Not currently online

Collection Overview

The holdings of the Anatomical Museum were collected predominantly during the mid-late 1800s. The Egyptian collection is represented through human skulls and crania. These were collected as part of the Phrenological Museum of the Edinburgh Phrenological Society, and as part of comparative human anatomy studies. The specimens relating to phrenology were often prepared with plaster to create an artificial maxilla. The vast majority of the specimens in the collection are skeletonised, though a small number of Egyptian specimens are mummified.

Object types

Mummified human remains; human remains

Scottish Ancient Egyptian Collections Review

Edinburgh University Library Special Collections, University of Edinburgh

Contact Head of Special Collections
Centre for Research Collections crc@ed.ac.uk

Location of Collections

In storage

University of Edinburgh Library
University of Edinburgh
30 George Square
Edinburgh
EH8 9LJ

New College Library
University of Edinburgh
Mound Place
Edinburgh
EH1 2LX

Size of collections

18 objects

Published Information

Online Collections: Oxyrhynchus Papyri collection
<https://archives.collections.ed.ac.uk/repositories/2/resources/85254>

Collection Highlights

- Eighteen papyrus documents from Oxyrhynchus.
- Four faience shabtis of varying sizes and dates, distributed by the Egypt Exploration Society.

Collection Overview

The University of Edinburgh Library Special Collections cares for eighteen papyrus documents, excavated in Oxyrhynchus by Grenfell and Hunt on behalf of the Egypt Exploration Society.

These documents are listed below:

P.Oxy 14 Elegiacs, Second century AD

P.Oxy 51 Report of a public physician, AD 173

P.Oxy 97 Appointment of a representative, AD 115-116

P.Oxy 100 Sale of land, AD 133

P.Oxy 204 List of symmachoi, Seventh century AD

P.Oxy 309 Copies of tax receipts, AD 17-19

P.Oxy 337 Notice to the agoranomos, AD 89

P.Oxy 376 Agreement by Titus Flavius Clemens, AD 77

P.Oxy 896 Reports to a logistes, AD 316

P.Oxy 905 Marriage contract, AD 170

P.Oxy 906 Deed of divorce, Second or early Third century AD

P.Oxy 1106 Letter to Paulus, Sixth century AD

P.Oxy 1199 Notification of purchase, Third century AD

P.Oxy 1424 Letter of a centurio princeps, AD 318

P.Oxy 1486 Invitation to a feast, Fourth century AD

P.Oxy 1563 Horoscope, AD 258

P.Oxy 1609 Philosophical work; metrological fragment, Second century AD

P.Oxy 1807 Aratus, Diosemeia, Second century AD

During the current collections review, five shabtis were brought to the attention of the project. Four of these objects include labels matching examples seen in other museums. They were distributed by the Egypt Exploration Society, possibly from excavations at Abydos or el-Amrah, though this has not been confirmed.

Known Donors and Sites Represented

Sites

<i>Site</i>	<i>Excavator/season</i>	<i>No of Objects</i>	<i>Objects</i>
Oxyrhynchus	EES Bernard P Grenfell and Arthur S Hunt	18	Papyri

Donors

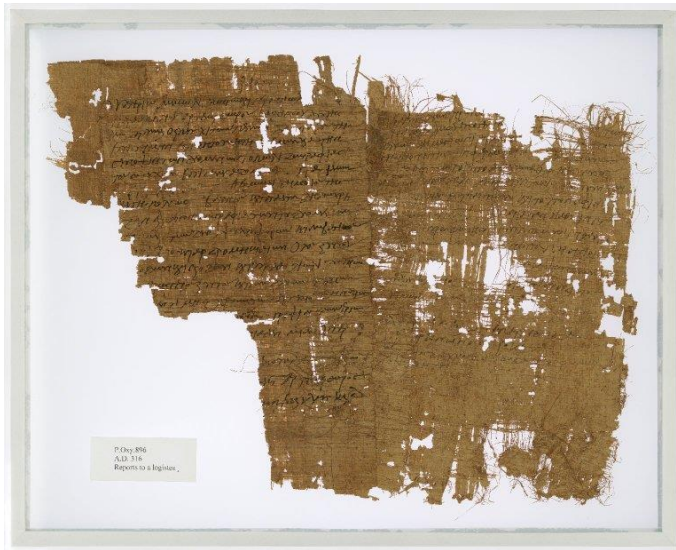
<i>Donor</i>	<i>Category</i>	<i>No of Objects</i>	<i>Objects</i>
Egypt Exploration Society	Archaeology	22	Papyri, shabtis

Object types

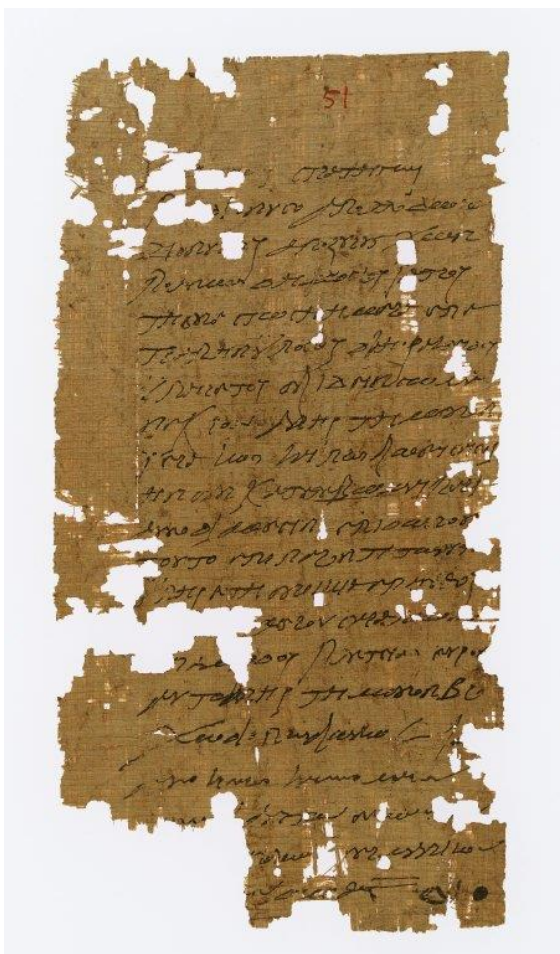
Papyri; shabtis

Key Object Images

P.Oxy 896 Reports to a logistes, AD 316



P.Oxy 51 Report of a public physician, AD 173



Shabtis identified during the review, including four faience shabtis distributed by the Egypt Exploration Society.



Scottish Ancient Egyptian Collections Review

Vere Gordon Childe Collection, University of Edinburgh

Contact Guillaume Robin guillaume.robins@ed.ac.uk

Location of Collections

In storage

School of History, Classics and Archaeology
William Robertson Wing
Old Medical School
4 Teviot Place
Edinburgh
EH8 9AG

Size of collections

>100 objects

Published Information

Online Collections: <https://www.ease.ed.ac.uk/cosign.cgi?cosign-eucsCosign-collections.shca.ed.ac.uk&http://collections.shca.ed.ac.uk/childe>

(Only accessible with a University login)

Collection Highlights

- Black/red and Black/black ripple sherds, Predynastic Badari (c.4400–4000 BC).
- Faience shabti purchased at the Cairo Museum (c.1069–664 BC).

Collection Overview

The collection is named after Vere Gordon Childe (1892–1957), the excavator of Skara Brae and Abercromby Professor of Prehistoric Archaeology at the University of Edinburgh between 1927 and 1946. He formed a reference collection for university study which was later added to by his successors, Stuart Piggott and Dennis Harding, as well as by outside donations.

The collection now houses objects from across the world, including the Indus Valley, Egypt, Mediterranean and Europe north of the Alps. There is a particular emphasis on stone tools and lithic technology.

The Egyptian collection is made up predominantly of lithics collected in the Faiyum depression. These objects are complemented by a small collection of Predynastic ceramics, some of which were donated to the collection by W M Flinders Petrie (1853–1942). Particularly notable examples are several Black-topped red ware pottery sherds with ripple decoration, one of which is pierced as part of an ancient repair (c.4400–4000 BC).

During his collecting and research, Childe also purchased seven or more small objects from the Cairo Museum, including shabtis and other faience objects.

Known Donors and Sites Represented

Sites

<i>Site</i>	<i>Excavator/season</i>	<i>No of objects</i>	<i>Objects</i>
Abydos		6-11 (some labelled Abydos/Naqada)	Lithics
Amarna	EES (c.1933) Previously of Ashmolean Museum Oxford	1	Beads
Badari (?)		13	Lithics, ceramics
Faiyum		25	Lithics
Giza		1	Stone vessel
Memphis		4	Ceramics
Naqada		1-6 (some labelled Abydos/Naqada)	Lithics
Sakkara			Necklace

Donors

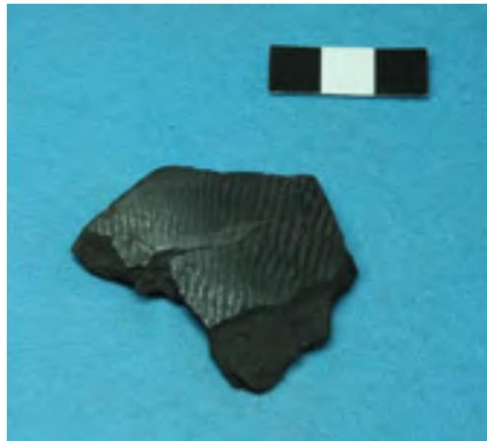
<i>Donor</i>	<i>Category</i>	<i>No of Objects</i>	<i>Objects</i>
Vere Gordon Childe (1892–1957)	Archaeology		
W M Flinders Petrie (1853–1942)	Archaeology	5	Predynastic pot sherds

Object types

Lithics; ceramic; jewellery; amulets; stone vessels, figurines; linen; shabtis; faience

Key Object Images

Black-topped red ware pottery sherds with ripple decoration, Badari (c.4400–4000 BC)



Faience shabti purchased from the Cairo Museum (c.1069–664 BC).



Scottish Ancient Egyptian Collections Review

Linlithgow Museum, Linlithgow Heritage Trust

Contact General enquiries enquiries@LinlithgowHT.onmicrosoft.com

Location of Collections

On display

Linlithgow Partnership Centre
High Street
Linlithgow
EH49 7EX

Size of collections

<5 objects

Published Information

Online collections: Not currently available online

Collection Highlights

- Two faience shabtis of a man named Nespautitawy, Thebes (c.1186–945 BC)

Collection Overview

Linlithgow Museum is a volunteer run community museum that tells the story of the town. The displays cover the history of Mary Queen of Scots through Linlithgow's industrial past to important community activities such as the Marches. The Museum is run by Linlithgow Heritage Trust which is a registered charity.

The two shabtis were identified in 2018 as part of the National Museums Scotland review of Egyptian collections in Scotland. They are both made from faience and belonged to a man called Nespautitawy. The name is specific to a certain time, dating to between 1186 and 945 BC, which is equivalent to the end of the New Kingdom/ beginning of the Third Intermediate period. There are a few coffins in the Kunsthistorisches Museum Vienna that belong to someone with the same name, though it is not possible to say if it is the same person. Similarly, the name suggests that the shabtis were collected in or around Luxor (ancient Thebes). They were collected by Abercorn schoolmaster Christopher Dawson (fl.1846), whose collection was gifted to Linlithgow Town Council on his death. His collection also included objects from the Americas and New Zealand, some of which were donated to him by the Earl of Hopetoun and were used to teach Dawson's pupils.

Known Donors and Sites Represented

Sites

<i>Site</i>	<i>Excavator/season</i>	<i>No of objects</i>	<i>Objects</i>
Thebes		2	Shabti

Donors

<i>Donor</i>	<i>Category</i>	<i>No of Objects</i>	<i>Objects</i>
Christopher Dawson (fl.1846)	Private (school teacher)	2	Shabti

Object types

Shabtis

Faience shabtis of Nespautitawy, Thebes (c.1186–945 BC)

Transcription of inscription (D Potter)



Scottish Ancient Egyptian Collections Review

National Museums Scotland

Contact Margaret Maitland m.maitland@nms.ac.uk
Dan Potter d.potter@nms.ac.uk
General enquiries WorldCulturesEnquiries@nms.ac.uk

Location of Collections

On display

National Museum of Scotland
Chambers Street
Edinburgh
EH1 1JF

In storage

National Museums Collection Centre
242 West Granton Road
Edinburgh
EH5 1JA

Size of collections

<6,000 objects

Published Information

Online Collections: <https://www.nms.ac.uk/explore-our-collections/search-our-collections/>

Murray, M. A., (1900), *Catalogue of the Egyptian Antiquities in the National Museum of Antiquities, Edinburgh*, Edinburgh: Society of Antiquaries of Scotland.
<http://journals.socantscot.org/index.php/psas/article/view/6752/6721>

Ward, E., (1912), *Guide to the Collection of Egyptian Antiquities*, Edinburgh: His Majesty's Stationery Office.

Coptic and Early Islamic Textiles

http://repository.nms.ac.uk/353/1/Coptic_and_Early_Islamic_textiles.pdf

Lightfoot, C. S., (2007), *Ancient Glass in National Museums Scotland*, Edinburgh: National Museums Scotland.

Manley, B. and Dodson, A., (2010), *Life Everlasting. National Museums Scotland Collection of Ancient Egyptian Coffins*, Edinburgh: NMS Enterprises Ltd.

Maitland, M., (2017), *The Tomb: Ancient Egyptian Burial*, Edinburgh: NMS Enterprises Ltd.

Collection Highlights

- The 'Rhind Tomb' group of objects excavated by Alexander Henry Rhind (1833–63) in Sheikh Abd el-Qurna, including a unique funerary canopy (c.9 BC) A.1956.353, a

gilded mummy-mask belonging to Montsuef (c.9 BC) A.1956.191, two large personalised funerary papyri belonging to Montsuef and his wife Tanuat (c.9 BC) A.1956.313, A.1956.314 and an early 19th dynasty statue of a 'Chief of Police' and his wife (c.1322–1279 BC) A.1956.143.

- The 17th dynasty 'Qurna Queen' burial assemblage (c.1585–1545 BC). Including a large *rishi* coffin A.1909.527.1, +1 A, a large number of ceramic vessels, stone cosmetic jars, furniture and an exceptional collection of jewellery.
- Mummy-portrait in encaustic wax, depicting a woman wearing a red tunic and elaborate jewellery, Hawara A.1951.160 (c. AD 110–130). Commonly known as 'Jewellery Girl'. It was presented to the Egyptian Research Students Association following Petrie's excavations at Hawara.
- Limestone sculptor's trial piece depicting the head of King Akhenaten in profile wearing the Blue Crown, probably Amarna (c.1353–1336 BC). A.1969.377
- The burial group of Petamun and Penhorpabik. These two half-brothers were buried together in the only known coffin made for two people, with matching amulets and papyri, Thebes (c. AD 175–200). The group was purchased by Alexander Henry Rhind. A.1956.357 + 357 A-I.
- Coffin of Tairtsekher, the daughter of Iretnefret, Deir el-Medina (c.1292–1200 BC). A.1887.597; A.1887.597 A.

Collection Overview

National Museums Scotland's Egyptian collection is the largest in Scotland. Part of the Ancient Mediterranean collection, it covers all periods of Egyptian history and includes a number of objects of international significance. It is highly varied and includes historically important inscriptions, statuary and funerary material. The current collection is the result of the historic amalgamation of three institutional collections, the University of Edinburgh, the Royal Scottish Museum and the National Museum of Antiquities of Scotland.

The early collections of the National Museum of Antiquities of Scotland were formed primarily through the work of Alexander Henry Rhind (1833–63). Rhind was experienced in cutting-edge archaeological practice before applying his skills to excavation in Egypt. He was the first professional archaeologist to scientifically excavate and record an intact tomb in Egypt, thus providing a better understanding of ancient Egyptian funerary customs from a complete burial assemblage in context. He curated the first displays of Egyptian objects in the Museum, including objects he had excavated alongside plans and diagrams. The Museum also cares for his archival material, allowing recent research to re-identify objects excavated by Rhind, their archaeological context and importance. The objects excavated in the so-called 'Rhind Tomb' include a unique funerary canopy (A.1956.353), two large personalised funerary papyri belonging to Montsuef and his wife Tanuat (A.1956.313, A.1956.314) and an early 19th dynasty statue of a 'Chief of Police' and his wife (A.1956.143).

During the late 19th and early 20th centuries, the Museum supported several excavations conducted by the Egypt Exploration Society [Fund], Egyptian Research Account, the British School of Archaeology in Egypt and the Universities of Liverpool and Oxford. The Museum also sent Edwin 'Ted' Ward (1880–1934), an assistant curator who went on to become Director of the Royal Scottish Museum, to excavate with W M Flinders Petrie (1853–1942) who was often called the 'Father of Egyptian Archaeology'. These excavations led to several important object groups being distributed to Edinburgh. They include monumental stone objects from Serabit el-Khadim, the temples of Montuhotep II and Hatshepsut at Deir el-

Bahari, and several objects from the temple at Hierakonpolis. The most notable group acquired through this relationship is the 17th Dynasty burial group of the 'Qurna Queen', which includes a large *rishi* coffin (A.1909.527.1, +1 A) and exceptional examples of gold jewellery. The collection also includes one of the best surviving examples of ancient Egyptian gold working, an intricate pendant in the form of a catfish (A.1914.1079).

The Roman-Egyptian funerary material is particularly strong, including the only known double coffin from ancient Egypt (A.1956.357 + 357 A-I), several mummified individuals from Hawara and a well-known mummy-portrait of a woman known popularly as 'Jewellery Girl', presented to the Egyptian Research Students Association following Petrie's excavations at Hawara (A.1951.160).

The development of the collection is in part the legacy of Cyril Aldred (1941–1991) who served as a curator and later keeper from 1937–1974. As a scholar of ancient Egyptian art, he published many significant works for both academic and general audiences. During his tenure, he continued to develop the collection through purchases, new displays and commissions. His work was heavily influenced by his art historical approach and aesthetic considerations.

The collection also includes an important anthropoid coffin from the village of Deir el-Medina belonging to a child named Tairtsekher (A.1887.597, +597 A), a large carved relief wall fragment from the 6th Dynasty mastaba of Niankhnesut (A.1958.46) and cast of the Rosetta stone that was one of the first series of 4 produced in 1802 after the stone arrived in London (V.2017.17).

A number of objects from the collections were transferred to other museums in the mid-1950s, including Paisley Museum & Art Gallery (Renfrewshire Leisure), The Oriental Museum (University of Durham), National Museums Liverpool and The Chau Chak Wing Museum (University of Sydney, formerly Nicholson Museum).

A new, permanent gallery *Ancient Egypt Rediscovered*, displaying about 650 objects from the collection, opened in the National Museum of Scotland in early 2019.

Known Donors and Sites Represented

Sites

<i>Site</i>	<i>Excavator/season</i>	<i>No of Objects</i>	<i>Objects</i>
Abbasiya		11	Lithics
Abusir		5	Shabtis, ceramics, stonework
Abu Qir		1	Ceramic
Abydos	EES W M Flinders Petrie and Arthur Cruttenden Mace (1900–01) W M Flinders Petrie (1901–03) H Édouard Naville	289	Jewellery, scarabs, beads, tools, seals, amulets, cartonnage, shabtis, figurines, statues, carved relief, lithics, ceramics, stelae, weaponry

	(1908–09) H Édouard Naville and T Eric Peet with H R H Hall, William L S Loat (1909–10), (1911– 13) BSAE W M Flinders Petrie (1921–22)		
Amarna	EES T Eric Peet (1921–22) John D S Pendlebury (1935–36)	>120	Amulets, ceramics, carved relief, jewellery, seals, shabtis, faience, moulds, beads
Akhmim		22	Weaponry, mummy- labels, wooden coffins, mummified human remains, figurines
Alexandria		>10	Jewellery, ceramics
Armant	EES	10	Statues, figurines
Atfieh	EES John de Monins Johnson (1910–11)	4	Cartonnage, tool, cosmetics
Athribis	BSAE W M Flinders Petrie (1907)	36	Carved relief
Aswan	Georg A Schweinfurth	c.250 (labelled Thebes or Aswan)	Lithics
Badari	BSAE W M Flinders Petrie (1923–24)	30	Ceramics, beads, stone vessels, palettes
Benha		2	Amulet, stela
Ballas	ERA J Edward Quibell (1894–95)	8	Ceramics

Buhen	EES W Bryan Emery (1961–62)	9	Ore, charcoal
Beni Hassan	University of Liverpool John Garstang (1902–04)	34	Ceramics, funerary figures, weaponry, tomb models
Coptos		1	Statue
Deir el-Bahari	EES H Édouard Naville (1903–07)	>90	Carved relief, scarabs, shabtis, faience, architectural, tools, stela, figurines, foundation deposits, models, mummy- labels
Deir el-Bersha		4	Funerary figure, stone vessels
Deir el-Medina		9	Stelae, statues, coffin, ostrakon, shabtis
Deir Rifa (and Asyut)	BSAE W M Flinders Petrie (1906–07)	23	Jewellery, coffin, beads, linen, figurine, stone vessels
Dendera	EES W M Flinders Petrie (1897–98)	100	Stone vessels, stelae, carved relief, amulets, ceramics, mummified animal remains
Dimai (Soknopaiou Nesos)	EES Bernard P Grenfell and Arthur S Hunt (1900–01) BSAE? (c.1924)	15	Lithics, weaponry, terracotta, cosmetics
Edfu		1	Stone vessel
el-Amra	EES David Randall- MacIver and Anthony Wilkin (1900–01)	3	Ceramics
el-Behnasa (Oxyrhynchus)	EES	>110	Statue, stela, papyri, tools, terracotta,

	W M Flinders Petrie, Bernard P Grenfell and Arthur S Hunt (1896–97) Bernard P Grenfell and Arthur S Hunt (1903–04)		figurines, jewellery, cosmetics
el-Hibeh	EES Bernard P Grenfell and Arthur S Hunt (1902–03)	6	Shabtis, jewellery
el-Mansha		27	Amulets
el-Kab		12	Ceramics, statue
el-Riqqa	BSAE Reginald Englebach (1912–13)	8	Jewellery, scarab
el-Salmiya		1	Oyster shell
el-Sheikh Ibada (Antinoë)	EES John de Monins Johnson (1913–14)	6	Tools, cosmetics, jewellery
Faiyum	EES Bernard P Grenfell and Arthur S Hunt (1901–02) BSAE Gertrude Caton- Thompson (1925–26) Heywood Walter Seton-Karr (c.1904–08)	>190	Lithics, mummy- masks, cartonnage, footwear, funerary figures, tools, jewellery, ceramics
Faras	University of Oxford Francis Llewellyn Griffith (1910–11)	9	Scarabs, votives, faience, figurines
Gebelein		7	Stone vessels, ceramic, weaponry
Giza	BSAE W M Flinders Petrie (1906–07)	20	Canopic jars, carved relief, ceramics, statues, architectural

	Waynman Dixon (1872)		
Ghita	BSAE John Garrow Duncan and W M Flinders Petrie (1905–06)	14	Jewellery, cosmetics, mummy-mask
Gurob	BSAE W M Flinders Petrie (1920–21)	47	Amulets, scarabs, stone vessels, ceramics, jewellery, beads, shabtis
Hammamiya		3	Beads, palette
Haraga	BSAE Reginald Englebach (1913–14)	24	Scarabs, jewellery, cosmetics
Hawara	BSAE W M Flinders Petrie (1910–11)	33	Shabtis, cartonnage, mummy-portrait, amulets, figurines, glass, cosmetics,
Helwan		17	lithics
Hierakonpolis (Kom el-Ahmar)	ERA J Edward Quibell (1897–98) Fredrick W Green (1898–99)	30	Statues, amulets, architectural fragments, carved relief, lithics, weaponry, stone vessels
Hu (Diospolis Parva)	EES W M Flinders Petrie (1898–99)	118	Stone vessels, palettes, ceramics, tools, jewellery, beads
Ihnasya el-Medina (Herakleopolis Magna)	EES W M Flinders Petrie (1903–04) Aylward Manley Blackman and John de Monins Johnson (1909–10)	6	Linen, tool, inlays
Karanis	EES Bernard P Grenfell and Arthur S Hunt (1900–01)	1	Amulet

Kharga Oasis	Gertrude Caton-Thompson (1930–33)	12	Lithics
Kom Abu Billo (Terenuthis)		1	Carved relief
Kom Aushim (el-Rubaiyat)	EES Bernard P Grenfell and Arthur S Hunt (1900–01)	8	Seals, cosmetics, mummy-portrait, cartonnage
Kom Ombo		1	Stone vessel
Kom Umm el-Atl (Bacchis)	EES Bernard P Grenfell and Arthur S Hunt (1895–1901)	23	Lithics, furniture fragments
Lahun	BSAE Guy Brunton and W M Flinders Petrie (1920–21)	56	Jewellery, canopic jars, beads, amulets, lithics, coffin inlays, toy
Leontopolis		2	Statuette, faience plaque
Mahasna	EES Edward Ayrton and William L S Loat (1908–09)	18	Ceramics, palette, basketry, lithics, jewellery, stone vessels
Meidum	BSAE W M Flinders Petrie (1909–10)	1	Inlaid stone relief
Meir		5	Coffins, statuettes
Memphis	BSAE W M Flinders Petrie (1907–08), (1909– 10)	33	Lithics, gaming pieces, weaponry, stone vessels, architectural fragments, carved relief, stone stelae
Naqada	W M Flinders Petrie (1894–95)		Ceramics, stone vessels, jewellery, lithics, beads, amulet
Naukratis	EES Ernest A Gardiner and Francis Llewellyn Griffith (1885–86)	39	Ceramics, cosmetics, faience vessels, figurines, jewellery, scarabs, amulets, bronze

Qarara	EES Bernard P Grenfell and Arthur S Hunt (1902–03)	3	Leatherwork, jewellery, cosmetics
Qasr el-Banat	EES Bernard P Grenfell, Arthur S Hunt and David G Hogarth (1895–1901)	30	Cosmetics, furniture fragments, faience vessels, ceramics, lithics, tools
Qasr el-Sagha	BSAE Gertrude Caton- Thompson (1924–26)	21	Lithics
Qau el-Kebir	BSAE W M Flinders Petrie and Guy Brunton (1923–24)	41	Ceramics, beads, jewellery, stone vessels, cosmetics
Qena		1	Stone vessel
Rizaqat		1	Stone vessel
Saft el-Henna	BSAE John Garrow Duncan and W M Flinders Petrie (1905–06)	47	Jewellery, amulets, beads, scarabs
Sais		1	Shabti
San el-Hagar (Tanis)	EES W M flinders Petrie (1884)	105	Scarabs, shabtis, carved relief, figurines, toys, ceramics
Saqqara	EES	157	Amulets, stone vessels, ceramics, carved relief, figurines, weaponry, tools, shabtis, faience, statues, metal vessels, votives, mummified animal remains
Sedment	BSAE W M Flinders Petrie (1920–21)	108	Scarabs, basketry, linen, canopic jars, ceramics, stone vessels, shell,

			wooden vessel, lithics, tools, cosmetics, jewellery, beads, shabtis, sandals, wooden models
Serabit el-Khadim	EES W M Flinders Petrie (1904–05)	41	Statues, faience, scarabs, lithics, faience vessels
Shaghanbeh	BSAE John Garrow Duncan and W M Flinders Petrie (1905–06)	2	Amulet, scarab
Shurafa	BSAE W M Flinders Petrie (1911)	5	Ivory inlays, hairpins
Tarkhan (Kafr Ammar)	BSAE W M Flinders Petrie (1911–12)	2	Beads, jewellery
Tell Basta		74	Bronze, amulets, faience, scarabs, figurines, ceramics, coffin fragments, moulds, faience vessels
Tell Defenneh (Daphnae)	EES W M Flinders Petrie (1886)	18	Amulets, scarabs, weaponry
Tell el-Farain (Buto)	Veronica Marjory Seton-Williams?	1	Weight
Tell el-Mashkuta		1	
Tell el-Retaba	BSAE W M Flinders Petrie (1905–06)	2	Carved relief, faience
Tell el-Suelin		1	Shabti
Tell el-Yahudiyeh	EES H Édouard Naville (1887) BSAE W M Flinders Petrie (1905–06)	32	Amulets, stone vessels, weaponry, scarabs, inlays, lithics

Tell Nabasheh	EES W M Flinders Petrie (1886)	4	Scarabs, amulet
Tukh el-Qaramus	EES H Édouard Naville (1887)	1	Ceramic/foundation deposit
Tuna el-Gebel		1	Faience figurine
Thebes: including, Qurna, Dra Abu el-Naga, Karnak, Malqata, Sheikh Abd el-Qurna, Qurnet Murai, Ramesseum	BSAE W M Flinders Petrie (1908–09) A Henry Rhind (1856–57) HRH Albert Edward Prince of Wales (1869)	>360	Coffins, shabtis, ceramics, stone vessels, jewellery, basketry, cosmetics, mummified human remains, linen, foodstuffs, funerary cones, scarabs, lithics, tools, papyri, carved relief, funerary figures, figurines, statues, mummy-labels, canopic jars, furniture, leatherwork, ostraca, bricks, stelae, canopic jars, amulets
Valley of the Kings (including Valley of the Queens)		10	Stela, shabtis
Wadi el-Sheikh	Via Henry Ogg Forbes (c.1904)	64	Lithics
Yakuta	EES Bernard P Grenfell and Arthur S Hunt (1900–01)	3	Ceramic, bronze, weaponry
Zagazig		1	Carved relief

Donors

<i>Donor</i>	<i>Category</i>	<i>No of Objects</i>	<i>Objects</i>
Boston Municipal Museum	Institution (Museum)	7	Jewellery, beads, lithics, palettes, ceramics

(Boston, Lancashire)			
British School of Archaeology in Egypt	Archaeology	884	Scarabs, beads, jewellery, ceramics, stone vessels, cosmetics, linen, tools, weaponry, carved relief, statues, lithics, soul houses, furniture, coffins, mummified human remains, canopic jars, shabtis, glass, figurines, stelae, architectural fragments, basketry, wooden models, foodstuffs, funerary cones, textile
Dumfries Museum	Institution (Museum)	1	Shabti
Edinburgh Academy Sir Colin Scott-Moncrieff (1836–1916)	Institution (School) Engineer	3	Coffin, mummified human remains
Egypt Exploration Society	Archaeology	1184	Ceramics, statues, jewellery, beads, weaponry, stone vessels, amulets, carved relief, shabtis, sarcophagus fragments, cartonnage, mummy-mask, moulds, scarabs, figurines, lithics, cosmetics, leatherwork, bronze, ostrakon, toys, musical instruments, tools, wooden models, basketry, papyri, mosaic, metal vessels
Egyptian Research Students Association	Archaeology	1	Mummy-portrait

Gulbenkian Museum of Oriental Art, University of Durham	Institution (Museum)	1	Foodstuff
National Museum of Antiquities of Scotland (Society of Antiquaries of Scotland) Transfer to National Museums Scotland	Institution (Museum and Society)	420	Ceramics, funerary figures, mummy-mask, stelae, toys, beads, figurines, jewellery, shabtis, shabti boxes, amulets, furniture, funerary cones, foodstuffs, tools, ostraca, palettes, mummy-labels, lithics, papyri, coffins, coffin fragments, foodstuffs, linen, leatherwork, wooden models, glass, mummified human remains, bricks
University of Edinburgh	Institution	15	Shabtis, linen, coffin, coffin fragments, stelae, figurines, funerary cone
Peebles Museum	Institution (Museum)	2	Shabti, faience vessel
Queen's and Lord Treasurer's Remembrancer (Treasure Trove)	Institution	16	Shabtis, amulets, beads, modern productions
Robert Ready and Sons	Business (Electrotypists)	2	Replicas
Royal Observatory, Edinburgh	Institution	1	Architectural
Staatliche Museen zu Berlin, Gipsformerei	Institution (Museum cast makers)	3	Casts
University of St Andrews	Institution	8	Shabtis, figurines, linen, wood
Stewartry Museum (Kirkcudbrightshire) Alexander Finlay	Institution (Museum)	1	Statue

(Cairo)			
Wellcome Institute/ Wellcome Historical Medical Museum	Institution	19	Amulets, figurines, tools, palette, cosmetics
A W Acworth (fl. 1961–1972) and Mrs M W Acworth		27	Jewellery, amulets, glass
Cyril Aldred (1914–1991)	Academic (Egyptologist, Curator of National Museums Scotland)	63	Jewellery, figurines, beads, inlays, scarabs, modern reproductions, shabtis
Jorgen Anderson Via M B Ralston (Edinburgh)		1	Statue
<i>Anonymous donors</i>		32	Coins, carved relief, funerary cones, amulets, ceramics, foodstuffs, gaming piece, cosmetics, jewellery, figurines
Thomas Croxen Archer (1817–1885)	Academia (Botanist, first Director of National Museums Scotland)	31	Amulets, figurines, inlays, ceramic
Duke of Atholl Likely John George Stewart-Murray, 8th Duke of Atholl (1871–1942)	Military/politics	1	Shabti
Mrs James Baikie Rev James Baikie (1866–1931)	Wife of Academic (Egyptology and Church Minister)	1	Cast
J A Bayne (Edinburgh)		1	Bronze statuette

Lady Katherine Binning (1871–1952)	Aristocracy	16	Amulets, jewellery
G F Black (fl.1888–1896)		17	Lithics
Frances Boyd		1	Jewellery
Domenico Brucciani and Co	Business (cast makers)	1	Cast
R Burnet		1	Coin
Jean Cairns and Miss Cattnach (Juniper Green, Midlothian)		1	Stela
Charlotte Cameron MBE		3	Jewellery, bead
Rev Colin Campbell (1848–1931)	Religious/archaeology	15	Funerary cones
Mrs Colin Campbell		1	Coin
E Campbell		1	Coin
Jean Campbell (Lochgilphead)		1	Carved relief
W Campbell (Edinburgh)		1	Mummified animal remains
William Campbell (fl. 1897–98)		3	Shabti, figurines
Gertrude Caton-Thompson (1888–1985)	Archaeology	9	Lithics
Nichan Chahinian		6	Bronze votives
Rev Greville John Chester (1830–1892)	Archaeology/religion	16	Amulets, weaponry
Captain L D Christie	Military	1	Shabti

Sir Casper Purdon Clarke (1846–1911)	Academic (Architect and Assistant Keeper, later Director of South Kensington Museum)	20	Textiles
Charles Trick Currelly (1876–1957)	Archaeology	87	Jewellery, tools, ceramics, stela, figurines, weaponry, carved relief, amulets, stone vessels, model house, moulds, inlays, mummy-mask
Mr Cursiter		1	Bronze lamp
A M Dalglish		1	Coin
Waynman Dixon (1844–1930)	Archaeology/engineer	22	Amulets, beads, lithics, casts
W L Ferguson (Edinburgh)		1	Statue fragment
Sir William Fettes Douglas (1822–1891)	Artist (President of the Royal Scottish Academy)	1	Bronze key
Mrs J M Douglas-Hamilton (Poolewe and Isle of Ornsay)	Aristocracy?	3	Amulet, jewellery
Amelia B Edwards (1831–1892)	Archaeology (co-founder of EES)	7	Textiles
Jean O Elliot (Melrose)		3	Scarabs
Mrs E L Farquharson (Edinburgh)		1	Cast
John Ritchie Findlay (1824–1898)	Business (newspaper owner)	5	Lithics
A H Liston Foulis (Edinburgh)		1	Amulet
Henry Ogg Forbes (1851–1932)	Academic	64	Lithics

	(botanist/ornithologist, later Director of Worlds Museum, Liverpool)		
Miss Forrester (Edinburgh)		1	Modern production
G Fraser		15	Bronze statuettes, metal vessels
Elinor Wight Gardner (1892–1980)	Archaeology/ academia (geology)	3	Lithics
John Garstang (1876–1956) via Beni Hasan Excavation Committee	Archaeology	18	Ceramics
Mrs G M Keiller Grieg (Ballater, Aberdeenshire)		1	Sistrum
C L Harbert		1	Bronze
Dorothea Hamilton (Edinburgh)		1	Linen
Sir John Home, 12th Baronet of Blackadder (1872–1938)	Aristocracy	21	Amulet, coffin inlays
Colonel Arbuthnot James Hughes (b.1856– 1919 fl.) On behalf of Royal Artillery Institution, Woolwich	Military Institution (regimental museum)	5	Coffin, coffin lid, cartonnage, mummified human remains
Sir Hugh Hume- Campbell of Marchmont Likely	Politician	3	Jewellery, scarab, amulet

Sir High Purves-Hume-Campbell, 7th Baronet (1812–1894)			
Alex Ingles		1	Funerary cone
Mr K Ingles (Edinburgh)		53	Amulets, inlays, shabtis, moulds, beads, figurines
Lt-Col Innes	Military	11	Lithics
Dr A K James (Edinburgh) via E A W James		1	Ceramic
E M and J G Linlithgow		17	Ceramics, stelae, glass
J Maconochie		1	Shabti
R W Martin		1	Coin
A S Maynard		1	Coffin base
Robert Mayne (1782–1867)		4	Shabtis
Mrs McVitie (Edinburgh)		1	Ceramic
Arthur D Morice		1	Arrowhead
Dr Duncan M Morison		1	Cast
Miss Murray		2	Textile, human hair
G W Murray		3	Palette, ceramic, stone vessel
John Ivor Murray (1824–1903)	Medical (surgeon)	22	Amulets, shabtis, basketry, furniture, figurines, papyri, ceramics, funerary cone
Keith R Murray		4	Lithics

K M Mylne On behalf of Dalhousie School, Fife	Institution	1	Statue
Mrs Thomas Nelson (Edinburgh)		1	Mummified human remains
Annie Grogan, Lady Noble (Ardkinglas) (1878/9–1973)		1	Glass
Earl of Northesk Likely George John Carnegie, 9th Earl of Northesk (1843–1891)	Military/aristocracy	2	Stone vessels
Mary Palmer- Douglas (Cavers, Hawick)		>19	Shabtis, amulets, canopic jar stoppers, funerary cones
W M Flinders Petrie (1853–1942)	Archaeology	15	Shabtis, stone vessel, beads, figurine, metal vessels, jewellery, glass
Phyliss S E Philpott (Southampton)		22	Jewellery/beads
Piot Collection		11	Glass, beads, jewellery
Albert (Wojciech) Szeliga Potocki (1801–1848/1853)	Traveller/writer	1	Jewellery
Frederick George Hilton Price (1842–1909)	Business (banking) Archaeology (President of the EEF)	31	Amulets, inlays, beads, scarabs, figurines
Eric Raeburn		11	Scarabs, beads, jewellery, figurines, sandal
Dr Karl Reinhardt		1	Textile

Dr James Smith Richardson (1883–1970) Carried out by executors of the above and Scott Moncrieff and W S Trail	Academia (Architect, Trustee of the National Museum of Antiquities of Scotland, Inspector of Ancient Monuments for Scotland)	3	Glass
David C Robertson (Edinburgh)	Private (collector)	689	Amulets, cosmetics, stone vessels, jewellery, gaming pieces, mummy-labels, scarabs, statues, tools, weaponry, lithics, ceramics, palettes, bronze, ostrakon, foodstuffs, figurines, shabtis, coins
Miss M E Rogers		2	Ceramics
Miss Russell (Edinburgh)		10	Ceramics
Rev Prof Archibald Henry Sayce (1845–1933)	Archaeology/ Academia (University of Oxford, Assyriologist)	11	Ceramics
Georg August Schweinfurth (1836–1925)	Academia (botanist, geographer)	260	Lithics
Miss Scoresby-Jackson		1	Amulet
Heywood Walter Seton-Karr (1859–1983)	Archaeology	130	Lithics
Mrs T S Smith		1	Shabti
Prof William Robertson Smith (1846–1894)	Religion/academia (Minister, Old Testament/Divinity)	1	Lithic tool

Dr Douglas Strachan (Edinburgh)	Medical	1	Cast
F D Stewart		6	Bronze, figurines, glass, stone vessels, shabti
Kathleen Stirling-Cookson (Edinburgh)		8	Jewellery, stone vessels, cosmetics, scarabs
Comte Gaston de St Maurice (1831–1905)	Aristocracy	1	Clothes buckle
Elizabeth, Countess of Sutherland (1921–2019)	Aristocracy	1	Papyrus
Mrs J C Spence		4	Coins
Fannie Thomas (Balham, London)		20	Textiles
E H Thompson (Dalkeith)		1	Stela
Charles Taylor Trechmann (1884–1964)	Archaeology/ academia (geology)	430	Beads, inlays, figurines, shabtis, statues, amulets, scarabs, jewellery, cosmetics, glass, stone vessels, tools, weaponry, seals, ceramics, palettes, bronze, metal vessels, carved relief, stelae, funerary cones
G W Turner		2	Carved relief, mosaic
HRH Albert Edward, Prince of Wales (1841–1910) Later Edward VII, King of the United Kingdom of Great Britain and Ireland, Emperor of India	Royalty	4	Coffins

Henry Wallis (1830–1916)	Artist (Pre-Raphaelite painter)	1	Textile
Sir Charles George Walpole (1848–1926)	Legal (Chief Justice of the Bahamas)	4	Lithics
Mrs G P Watson (Edinburgh)		1	Ceramic
Mrs Wight (Edinburgh)		2	Jewellery
R Woollett		1	Ceramic

Object types

Amulets; architectural fragments; basketry; beads; bricks; canopic jars; coffins; coffin fragments; Coptic material; cosmetics; casts; cartonnage; carved reliefs; ceramics; coins; faience; faience vessels; foodstuffs; foundation deposits; funerary cones; figurines; furniture; glass; inlays; jewellery; leatherwork; linen; lithics; metals; metal vessels; modern productions; mosaic; moulds; mummified animal remains; mummified human remains; mummy-masks; mummy-portraits; mummy-labels; musical instruments; offering tables; ostraca; papyri; plant material; rope; sarcophagus fragments; statues; scarabs; shabtis; shabti boxes; palettes; papyri; soul houses; stelae; stone vessels; textiles; toys; tools; weaponry; wooden models

Key Object Images

Funerary canopy of Montsuef, from the 'Rhind Tomb' (c.9 BC). A.1956.353



Gilded mummy-mask of Montsuef, from the 'Rhind Tomb' (c.9 BC). A.1956.191



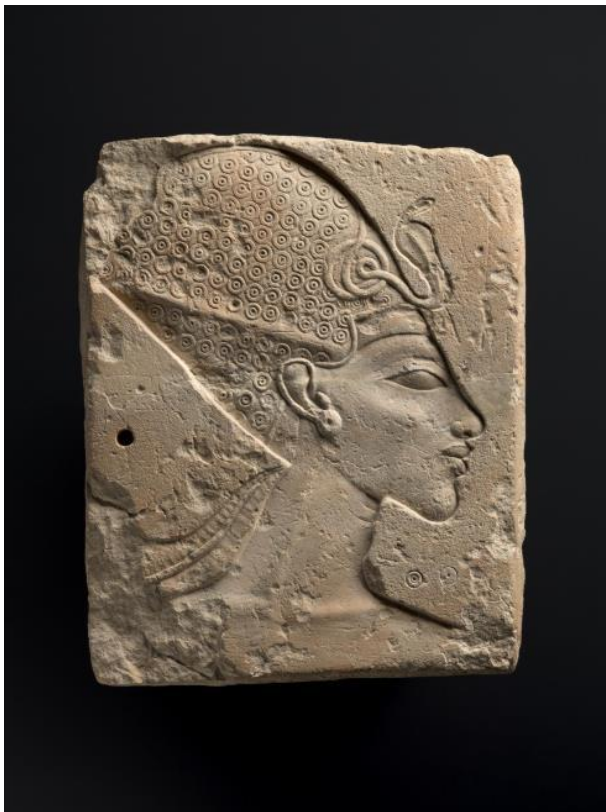
Painted and gilded *rishi* coffin of the 'Qurna Queen', Thebes (c1585–1545 BC).
A.1909.527.1; A.1909.527.1 A



Mummy-portrait, depicting a woman wearing a red tunic and elaborate jewellery, Hawara (c. AD 110–130). Commonly known as ‘Jewellery Girl’. A.1951.160



Limestone sculptor's trial piece depicting King Akhenaten, probably Amarna (c. 1353–1336 BC). A.1969.377



**Double Coffin of Petamun and Penhorpabik, Thebes (c. AD 175–200). A.1956.357;
A.1956.357 A**



**Coffin of Tairtsekher, the daughter of Iretnefret, Deir el-Medina (c. 1292–1200 BC).
A.1887.57; A.1887.597 A**



Scottish Ancient Egyptian Collections Review

National Trust for Scotland

Contact Natasha Ferguson nferguson@nts.org.uk

Regional offices <https://www.nts.org.uk/our-people/regional-offices>

Location of Collections

(Correspondence address)
National Trust for Scotland
Hermiston Quay
5 Cultins Road
Edinburgh
EH11 4DF

Size of collections

Unknown / <5 objects

Published Information

Online Collections: Not currently online

Collection Highlights

- 19th/20th century tourist productions
- Two faience shabtis of the General Pakhas (c.300 BC)

Collection Overview

National Trust for Scotland (NTS) cares for around 300,000 objects held in over 50 properties across Scotland. This ranges from archival material to decorative art and furniture. During a collections review, colleagues at NTS identified two Egyptian objects that were produced for the booming tourist market in the late 1800s - early 1900s: a scarab with a highly decorative but false base inscription and a small stone pot with a seal on the base.

Previous collection reviews identified two Late Period shabtis in the Brodie Castle collection; their current status has not been ascertained. One of these belonged to the General Pakhas, born of Tashaded, whose tomb is in Giza. Shabtis of this individual are known in collections in Cairo, Bonn, Copenhagen, Kaza, Liverpool, London, Providence, Toulouse, Odessa, Paris, Vatican City and Yuryev.

Known Donors and Sites Represented

Sites

<i>Site</i>	<i>Excavator/season</i>	<i>No of Objects</i>	<i>Objects</i>
Unknown			2

Donors

<i>Donor</i>	<i>Category</i>	<i>No of Objects</i>	<i>Objects</i>
Unknown			2

Object types

Tourist productions

Modern scarab seal

