

II. Individual Records

Department: Royal Engineers Museum, Library and Archive, Gillingham, Kent

Collection Type: North American Collection

Accession number: REMLA.4201.35.1

No. of items: 1

Category

Clothing and Accessories

Object name:

Coat



© Royal Engineers Museum, Library
& Archive



© Royal Engineers Museum, Library
& Archive

Description

A tailored moose skin coat decorated with multi-coloured geometric and floral quillwork on the shoulder epaulets, lapels, cuffs and along the seams on the back of the coat. The quillwork on the lapels and cuffs is floral, whereas the strips of quillwork on the sleeves, shoulders and the back are a geometric pattern. The predominant colours are red and white, but yellow, green and blue is also used. The cuffs are also decorated with strands of dyed[?] moose hair. The bottom edge of the coat is fringed, and there is a fringed epaulet on one shoulder strung with white beads, the other is now missing. The coat has a single button fastening.

Notes

This style of coat is typical of coats made in using traditional North American materials and techniques, but modelled on European style coats, including military jackets. The geometric patterns are possibly of Algonquian origin, whilst the floral elements are European. This reflects both the European and Indian ancestry of Méti artisans.

Original description

ACCESSION REGISTER UNDER 'MISCELLANEOUS': 4201.35 Part of the dress of a North American Indian, comprising: coat, 1 Glove, 1, mocassins PR, 1, Leggings PR, 1, satchel beaded, 1.

ACCESSION REGISTER UNDER 'MISCELLANEOUS' c. 1912: Part of dress of a North American Indian, comprising:- coat, gloves, mocassins, leggings prs, satchel beaded, [crossed out in pencil] paddles, wooden. Lost March 1931.

ROYAL ENGINEERS MODEL ROOM LIST 1856-1858 [full date range of list 1859-1866]: 297 Part of the Dress of a North American Indian (Presented by) Captn. Moody, RE.

Production information:

Place: Winnipeg, Manitoba, Canada, North America

School/style: Metis or Méti

Date: c. 1840

Materials: Animal hide
Porcupine quill
Horse or moose Hair
Glass beads

Techniques: Dyed
Embroidered
Quilled

Dimensions:

Part	Dimension	Value	Unit	Precision	Notes
	Height	1100	mm		
	Width	470	mm		Shoulder to Shoulder
	Length	680	mm		Length of Sleeve

Condition assessment

Purpose: curatorial comment

Condition: Good

Date: 2014-06-09

Location

On display : 2014-05-01 :

Name Associations

The Royal Engineers

Type

regiment/service

Note

Moody, Hampden Clement Blamire, Captain (1821-1869)	personal name	Captain Moody was a captain from 1849-1858 and served in Canada from 1840-1848, mainly at Fort Garry, the Hudson's Bay Company trading post. From 1844-46 he was on confidential work for the company. His older brother Richard Clement Moody (1813-1887) also served with the regiment.
--	---------------	---

Associations Red River, Canada	Type place	Note
--	----------------------	-------------

Other numbers:

Number 297	Originator Royal Engineers Model Room List 1856-1858	Date 1856-1866
----------------------	---	--------------------------

Exhibitions

Name of exhibition: *The Royal Engineers Museum*
Exhibition area: The Royal Engineers in Canada: Sappers in Canada
Cat. Number: 3

Notes:

DISPLAY TEXT: Metis moose-skin coat, Red River, Canada, c1840. This coat belonged to Capt Hampden Moody RE. The design is based on European military style jacket, made by a member of the Metis community who were descended from the Native Americans and French fur trappers. Their dress mixes European and Native American design. The decoration is porcupine quillwork, a technique that died out with the import of European glass beads, some of which may be seen on the coat. Capt Moody served in Canada between 1840 and 1848, mainly at Fort Garry, a Hudson Bay Company trading station, which later becomes modern Winnipeg. During 1844-46 he was on confidential work for the company, probably incognito across the border in the USA. He may have worn this coat as part of a disguise.

Bibliographic references

David W. Penny. 'Captains Coats' in *Three Centuries of Woodlands Indian Art*, A Collection of Essays edited by J. C. H. King and Christian F. Feest, 2007, pp. 85-91

J. C. H. King. 1982. *Thunderbird and Lightning: India Life in Northeastern North America, 1600-1900*. pp .42-43 'Métis Coats'

II. Individual Records

Department: Royal Engineers Museum, Library and Archive, Gillingham, Kent

Collection Type: North American Collection

Accession number: REMLA.4201.35.2

No. of items: 1

Category

Clothing and Accessories

Object name:

Mitten



© Royal Engineers Museum, Library
& Archive



© Royal Engineers Museum, Library
& Archive

Description

One mitten made from animal hide, with a red wool cuff with a blue edge, and embroidered floral decoration around the cuff, on the front of the mitten and end of the thumb.

Original description

ACCESSION REGISTER UNDER 'MISCELLANEOUS': 4201.35 Part of the dress of a North American Indian, comprising: coat, 1 Glove, 1, mocassins PR, 1, Leggings PR, 1, satchel beaded, 1.

ACCESSION REGISTER UNDER 'MISCELLANEOUS' c. 1912: Part of dress of a North American Indian, comprising:- coat, gloves, mocassins, leggings prs, satchel beaded,

[crossed out in pencil] paddles, wooden. Lost March 1931.

ROYAL ENGINEERS MODEL ROOM LIST 1856-1858 [full date range of list 1859-1866]:
297 Part of the Dress of a North American Indian (Presented by) Captn. Moody, RE.

Production information:

Place: Winnipeg, Manitoba, Canada, North America
School/style: Metis or Méti

Date: c. 1840

Materials: Animal hide
Cotton Thread
Cloth

Techniques: Dyed
Embroidered

Dimensions:

Part	Dimension	Value	Unit	Precision	Notes
	Length	275	mm		
	Width	153	mm		

Condition assessment

Purpose: curatorial comment
Condition: Fair
Date: 2014-06-09

Location

In storage : 2014-05-01 :

Name Associations

The Royal Engineers
Moody, Hampden Clement
Blamire, Captain (1821-1869)

Type

regiment/service
personal name

Note

Captain Moody was a captain from 1849-1858 and served in Canada from 1840-1848, mainly at Fort Garry, the Hudson's Bay Company trading post. From 1844-46 he was on confidential work for the company. His older brother Richard Clement Moody (1813-1887) also served with the regiment.

Associations

Red River, Canada

Type

place

Note

Other numbers:

Number
297

Originator
ROYAL ENGINEERS
MODEL ROOM LIST
1856-1858

Date
1856-1866

II. Individual Records

Department: Royal Engineers Museum, Library and Archive, Gillingham, Kent

Accession number: REMLA.4201.35.3

No. of items: 2

Category
Clothing and Accessories

Object name:
Boots



© Royal Engineers Museum, Library
& Archive

Description

A pair of leather boots with embroidered decoration.

Notes

The accession number links these boots to the Moody's North American clothing, however these are not North American and have subsequently been identified as being from Siberia, Amur region. Their previous Model Room number is also not in sequence with the North American items indicating that they were in the collection by 1866 at the latest. They could possibly be associated with Capt. Shepherd, who was in Siberia in 1877, which is perhaps too late a date, for 'archaeological exploration and travel' according to the History of the Corps of Royal Engineers Vol. II (1951). As a result these boots were possibly made by the Nanai, who live in the Khabarovskii Krai, The Amur River Region, Russia.

Original description

ACCESSION REGISTER UNDER 'MISCELLANEOUS': 4201.35 Part of the dress of a North American Indian, comprising: coat, 1 Glove, 1, mocassins PR, 1, Leggings PR, 1, satchel beaded, 1.

ACCESSION REGISTER UNDER 'MISCELLANEOUS' c. 1912: Part of dress of a North American Indian, comprising:- coat, gloves, mocassins, leggings prs, satchel beaded, [crossed out] paddles, wooden. Lost March 1931.

ROYAL ENGINEERS MODEL ROOM LIST 1859-66: 512 Boots Embroidered.

Production information:

Place: Amur River Region, Siberia, Russia

School/style: Nanai [?]

Date: 19th Century

Materials: Leather

Techniques: Embroidered

Dimensions:

Part	Dimension	Value	Unit	Precision	Notes
	Length	450	mm		
	Width	190	mm		

Condition assessment

Purpose: curatorial comment

Condition: Poor

Date: 2014-06-09

Location

In storage : 2014-05-01 :

Name Associations

The Royal Engineers
Shepherd, Captain 1877 (fl.)

Type

regiment/service
personal name

Note

Capt. Shepherd was in Siberia in 1877 for 'archaeological exploration and travel' according to the History of the Corps of Royal Engineers Vol. II (1951).

Other numbers:

Number

512

Originator

Model Room List 1859-
1866

Date

1856-1866

Bibliographic references

History of the Corps of Royal Engineers Vol. II (1951) by Major-General Whitworth Porter, see pp. 363-378 for the reference to Captain Shepherd, who travelled from China, through Mongolia and Siberia.

II. Individual Records

Department: Royal Engineers Museum, Library and Archive, Gillingham, Kent

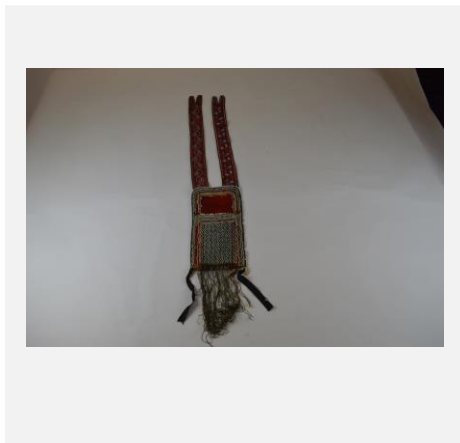
Collection Type: North American Collection

Accession number: REMLA.4201.35.4

No. of items: 1

Category
Clothing

Object name:
Bag / Satchel



© Royal Engineers Museum, Library
& Archive



© Royal Engineers Museum, Library
& Archive

Description

A bandolier style satchel or pouch bag made from red cloth decorated with beadwork consisting of white glass beads arranged in a zigzag/diagonal pattern across the centre of the front of the bag, and a strip of white glass beads is attached to the outer edge of the bag. The straps are decorated with floral embroidery and beadwork. There is a fringe along the bottom edge of the bag, strung with white glass beads.

Original description

ACCESSION REGISTER UNDER 'MISCELLANEOUS': 4201.35 Part of the dress of a North American Indian, comprising: coat, 1 Glove, 1, mocassins PR, 1, Leggings PR, 1, satchel

beaded, 1.

ACCESSION REGISTER UNDER 'MISCELLANEOUS' c. 1912: Part of dress of a North American Indian, comprising:- coat, gloves, mocassins, leggings prs, satchel beaded, [crossed out] paddles, wooden. Lost March 1931.

ROYAL ENGINEERS MODEL ROOM LIST 1856-1858 [full date range of list 1859-1866]: 297 Part of the Dress of a North American Indian (Presented by) Captn. Moody, RE.

Production information:

Place: Winnipeg, Manitoba, Canada, North America

School/style: Algonquian [?]

Date: c. 1840

Materials: Cotton Thread
Cloth
Glass beads
Cotton cord

Techniques: Embroidered
Beadwork

Dimensions:

Part	Dimension	Value	Unit	Precision	Notes
	Length	1180	mm		
	Width	190	mm		

Condition assessment

Purpose: curatorial comment

Condition: Fair

Date: 2014-06-09

Location

In storage : 2014-05-01 :

Name Associations

The Royal Engineers
Moody, Hampden Clement
Blamire, Captain (1821-1869)

Type

regiment/service
personal name

Note

Captain Moody was a captain from 1849-1858 and served in Canada from 1840-1848, mainly at Fort Garry, the Hudson's Bay Company trading post. From 1844-46 he was on confidential work for the company. His older brother Richard Clement Moody (1813-1887) also served with the regiment.

Other numbers:

Number
297

Originator
ROYAL ENGINEERS
MODEL ROOM LIST

Date
1856-1866

II. Individual Records

Department: Royal Engineers Museum, Library and Archive, Gillingham, Kent

Collection Type: North American Collection

Accession number: REMLA.4201.35.5

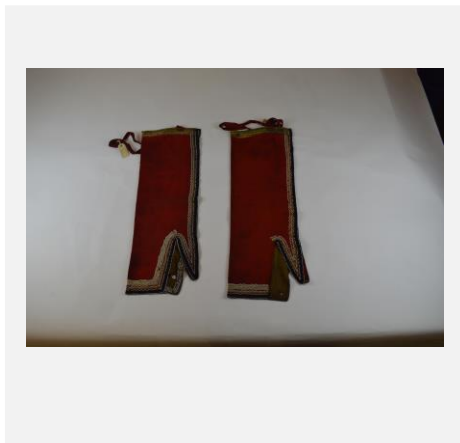
No. of items: 2

Category

Clothing and Accessories

Object name:

Leggings



© Royal Engineers Museum, Library
& Archive



© Royal Engineers Museum, Library
& Archive

Description

A pair of leggings made from red cloth, with a strip blue cloth around the outside edge and decorated with beadwork. Each legging has a loop of red ribbon attached to the top of it.

Original description

ACCESSION REGISTER UNDER 'MISCELLANEOUS': 4201.35 Part of the dress of a North American Indian, comprising: coat, 1 Glove, 1, mocassins PR, 1, Leggings PR, 1, satchel beaded, 1.

ACCESSION REGISTER UNDER 'MISCELLANEOUS' c. 1912: Part of dress of a North American Indian, comprising:- coat, gloves, mocassins, leggings prs, satchel beaded,

[crossed out] paddles, wooden. Lost March 1931.

ROYAL ENGINEERS MODEL ROOM LIST 1856-1858 [full date range of list 1859-1866]:
297 Part of the Dress of a North American Indian (Presented by) Captn. Moody, RE.

Production information:

Place: Winnipeg, Manitoba, Canada, North America
School/style: Ojibwa or Ottawa [?]

Date: c. 1840

Materials: Stroud Cloth/Wool
Glass beads
Ribbon
Deer Skin

Techniques: Beadwork
Dyed

Dimensions:

Part	Dimension	Value	Unit	Precision	Notes
	Length	680	mm		
	Width	230	mm		

Condition assessment

Purpose: curatorial comment
Condition: Fair
Date: 2014-06-09

Location

In storage : 2014-05-01 :

Name Associations

The Royal Engineers
Moody, Hampden Clement
Blamire, Captain (1821-1869)

Type

regiment/service
personal name

Note

Captain Moody was a captain from 1849-1858 and served in Canada from 1840-1848, mainly at Fort Garry (Winnipeg), the Hudson's Bay Company trading post. From 1844-46 he was on confidential work for the company. His older brother Richard Clement Moody (1813-1887) also served with the regiment.

Other numbers:

Number	Originator	Date
297	ROYAL ENGINEERS MODEL ROOM LIST 1856-1858	1856-1866

II. Individual Records

Department: Royal Engineers Museum, Library and Archive, Gillingham, Kent

Collection Type: North American Collection

Accession number: REMLA.4901.53.4

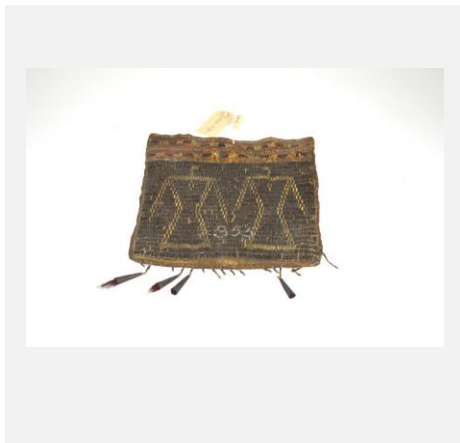
No. of items: 1

Category

Clothing and Accessories

Object name:

Bag / Satchel



© Royal Engineers Museum, Library
& Archive

Description

A satchel or bag decorated with dyed quillwork, embroidered with two abstract bird shapes in yellow which represent Thunderbirds. Attached to the bottom edge are metal cones containing dyed red moose hair [?]. Only four of these remain.

Notes

Thunderbirds are an important spirit in Algonquian and Iroquois mythology. They are creatures from the Upper World associated with fertility and with the creation of clouds and rain. They are in a constant of warfare with the Under World, against whom they use lightening.

This object was found amongst the South African beadwork in the early 1990s, and had mistakenly been connected with a group of objects brought back from South Africa by Colonel Durnford. The bag is also number with '355' which may relate to numbers used in the Model Room, which comprised of the earliest collections in what is now the Royal Engineers Museum with the catalogue covering accessions from 1856-1866.

Production information:

Place: North America

School/style: Algonquian

Date: 18th-mid 19th Century

Materials: Porcupine quill
Moose hair
Metal

Techniques: Quilled
Dyed

Dimensions:

Part	Dimension	Value	Unit	Precision	Notes
	Height	300	mm		
	Width	210	mm		

Condition assessment

Purpose: curatorial comment

Condition: Fair

Date: 2014-06-09

Location

In storage : 2014-05-01 :

Name Associations

The Royal Engineers

Type

regiment/service

Note

Associations

Bunker Hill, Charlestown,
Massachusetts, USA, North
America

Type

place

Note

Other numbers:

Number

355

Originator

ROYAL ENGINEERS
MODEL ROOM LIST
1856-1858

Date

1856-1866

A 56

[?]

II. Individual Records

Department: Royal Engineers Museum, Library and Archive, Gillingham, Kent

Collection Type: North American Collection

Accession number: REMLA.6.33 A-B

No. of items: 5

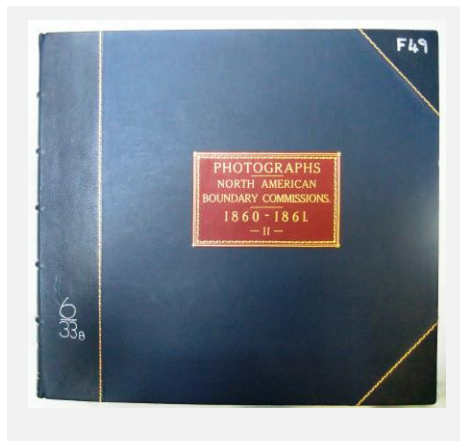
Category

Photographs

Archival

Object name:

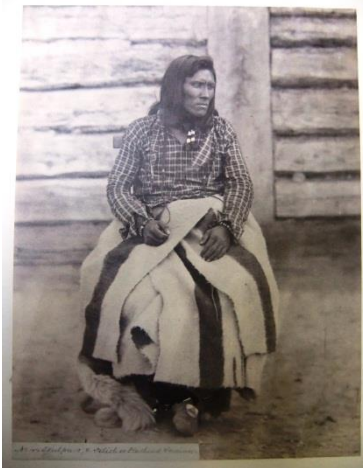
Photograph Album



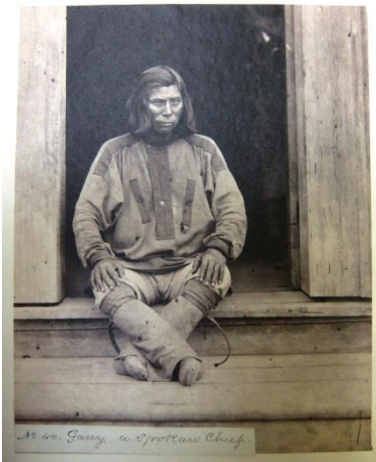
Photograph album North American
Boundary Commission REMLA.6.33
B



[Original caption] 'No. 44 Skulpu-e, a
Selish or Flathead Indian.'
Photograph album North American
Boundary Commission REMLA.6.33
B



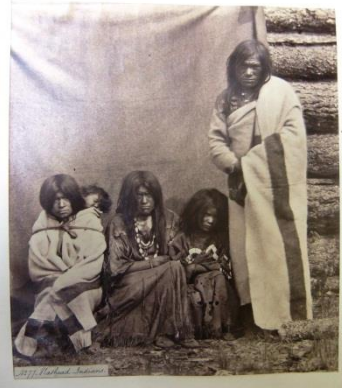
[Original caption] 'No. 44 Skulpu-e, a Selish or Flathead Indian.'
Photograph album North American
Boundary Commission REMLA.6.33
B



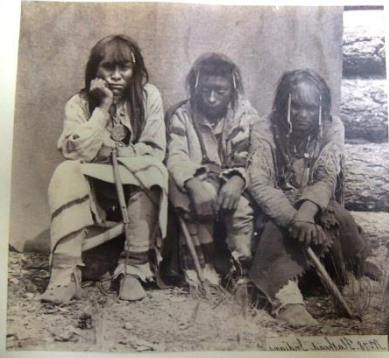
[Original caption] 'No. 46 Garry, a
Spokan Chief.' Photograph album
North American Boundary
Commission REMLA.6.33 B



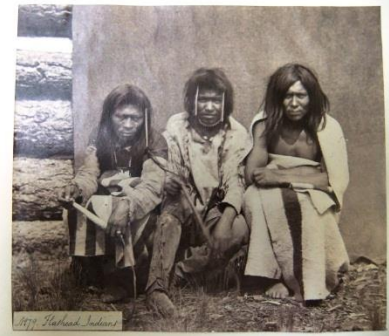
[Original caption] 'No. 47 Schweilp
or Colville. Woman & child.'
Photograph album North American
Boundary Commission REMLA.6.33
B



[Original caption] 'No. 77 Flathead Indians.' Photograph album North American Boundary Commission REMLA.6.33 B



[Original caption] 'No. 78 Flathead Indians'. Photograph album North American Boundary Commission REMLA.6.33 B



[Original caption] 'No. 79 Flathead Indians.' Photograph album North American Boundary Commission REMLA.6.33 B



[Original caption] 'No. 80 Photograph album, Christine McDonald [Angus McDonald]. Daughter of H.B.C. [Hudson's Bay Company] chief-trader at Fort Colville.' North American Boundary Commission REMLA.6.33 B



[Original caption] No. 81 'Half-breed child in cradle, with Indian ornamental trappings'. Photograph album, North American Boundary Commission REMLA.6.33 B

Description

Five photograph albums from the North American Boundary Commission:

An album with a blue leather cover with 'Photographs North American Boundary Commissions. 1860-1861 -I-' embossed in gold on a red leather square background on the front cover.

B album with a blue leather cover with 'Photographs North American Boundary Commissions. 1860-1861 -II-' embossed in gold on a red leather square background on the front cover.

These two volumes contain the 81 official photographs, one per page with a small handwritten caption in the bottom left-hand corner of each print, taken by the Royal Engineers during this commission.

C album with a blue cover with 'North American Boundary Commission Volume I and Index PA.11337-PA.74680' written in white on the front cover

D album with a blue cover with 'North American Boundary Commission Volume II C.4013-C.73302' written in white on the front cover

E album with a blue cover with 'North American Boundary Commission Volume III C.79629-C.82294' written in white on the front cover

These three volumes relate to the North American Boundary Commission carried out between 1872-1875 and are copies of images from the National Photography Collection, Public Archives, Canada. There is one image per page with a typed caption below each.

There is also an archival file [REMLA.M.2026] which relates to the Boundary Commission, which contains a draft manuscript by A. J. Birrell, Director of the National Photography Collection. Public Archives, Canada, titled 'North American Boundary Commission 1857-62' (1981).

Notes

Following the Oregon Treaty (1846) both the Britain and the US appointed official Boundary Commissions in 1857. The British commission was primarily concerned with marking the boundary between British Columbia and America along the 49th Parallel east to the crest of the Rocky Mountains. Lieutenant-Colonel John Hawkins was in charge accompanied by a party of 55 Royal Engineers. The first photographer sent out for this work in 1858 but deserted soon after, the two replacements did not arrive for another year (October 1859). But when they did they took 23 photographs around Victoria and Esquimalt winter 1859-1860 (these are now lost?) and 81 official photographs between 1860 - 1861. At least 31 of these were taken at Fort Colville, an overall only 34 of the official 81 photographs were taken in the field, the rest were taken at camps.

A detachment of 44 men, including 4 photographers, from the Royal Engineers also accompanied the second official boundary commission from 1872-1875 again along the 49th Parallel from the Northwest Angle of Lake of the Woods to the Rocky Mountains.

These albums (especially REMLA.6.33 B) contain a number of images of Native Americans, formally posed seated or standing in front of plain backdrops (a blanket erected specifically as a plain background) or outside buildings. From these images it is clear that the Royal Engineer's photographers were following Schaw's (1860) advice written in his 'Notes on Photography':

(A) on the uses of photography (p. 109) - '10. Obtaining portraits of remarkable persons and costumes of foreigners. For amateurs, photographs of scenes, places, and persons which have interested them in different countries they may have visited, must, in after years, prove deeply interesting both to themselves and to others, and will well repay the trouble and expense incurred in obtaining them.'

(B) on taking portraits (p. 118) - 'A dark background generally gives the most pleasing effect'.

Production information:

Place: Canada, North America
Date: 1860-1875

Materials: Photographic prints

Condition assessment

Purpose: curatorial comment
Condition: Good
Date: 2014-06-09

Location

In storage : 2014-05-01 :

Name Associations

The Royal Engineers

Type

regiment/service

Note

Associations

49th Parallel, Canada, North America
North American Boundary Commission (1860-1875)

Type

place
event

Note

Other numbers:

Number

F49
F45
779 526.9(7)
F47

Originator

Date

Exhibitions

Name of exhibition: *The Royal Engineers Museum*

Exhibition area: The Royal Engineers in Canada: Sappers in Canada

Cat. Number: 2

Notes:

One of the photographs (no. 58) from the 1860-1861 albums is used as a large illustration on the back wall of this case accompanied by the following DISPLAY LABEL: The background photograph shows men of the North American Boundary Commission 1860-61 cutting the 49th Parallel from the west coast across the Rockies. Four sapper officers and 56 soldiers of the Corps cut a 20ft wide path along the line of the parallel. This was one of the commissions to mark the boundary between Canada and the United States.

See catalogue by A. J. Birrell, Director of the National Photograph Collection. 15 prints from the 1858-1862 album [REMLA.6.33 A-B] were loaned to the exhibition.

Bibliographic references

A. J. Birrell. 1975. *Into the Silent Land: Survey Photography in the Canadian West, 1858-1900*. A Public Archives of Canada Travelling Exhibition. National Photograph Collection, Public Archives of Canada.

Schaw, H., 1860, 'Notes on Photography'. In *Papers on subjects connected with the duties of the Corps of Royal Engineers, new series, Vol. IX*, 108-128

II. Individual Records

Department: Royal Engineers Museum, Library and Archive, Gillingham, Kent

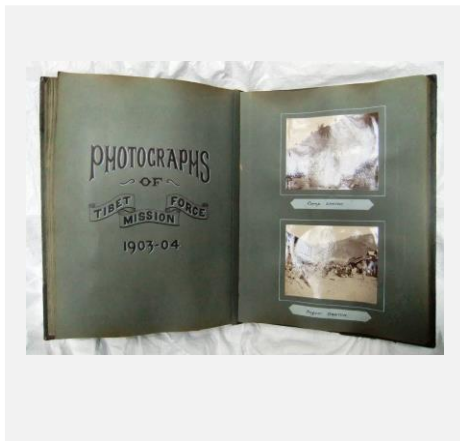
Collection Type: Tibetan Collection

Accession number: REMLA.4.106

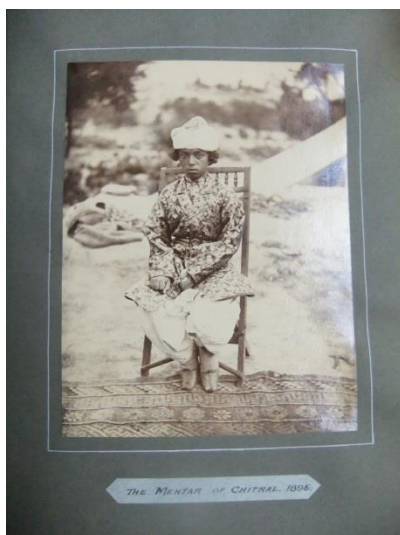
No. of items: 2

Category
Photographs

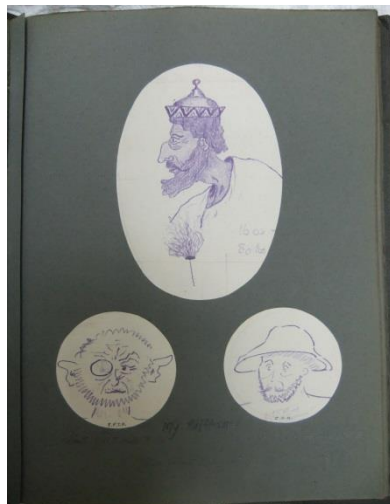
Object name:
Photograph Album



'Photographs of Tibet Mission Force
1903-04'
[REMLA.5.23]



[Original caption] 'The Mehtar of
Chitral, 1895'
REMLA.5.23



[Original caption] 'My Officers'
[REMLA.5.23]



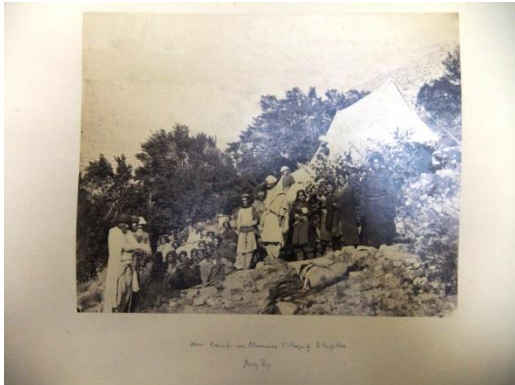
[Original caption] 'A Lama from
Kartok'
[REMLA.5.23]



[Original caption] 'Raja of Sikkim &
Family'
[REMLA.5.23]



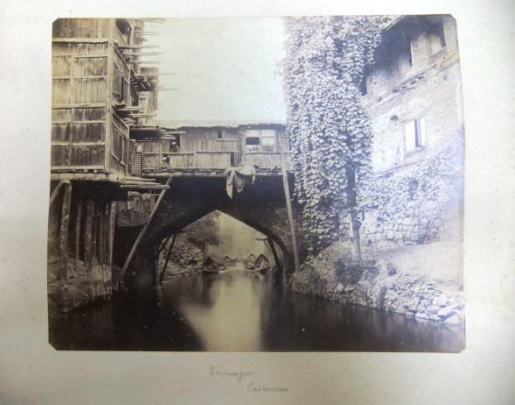
REMLA.4.106 Album cover



[Original caption] 'Our camp in the Chinese Village of Shipkee July '64'
[REMLA.4.106]



Photographic equipment in the field
[REMLA.4.106]



[Original caption] 'Cashmere',
attributed to Bourne
[REMLA.4.106]



[Original caption] 'Bourne 63'
[REMLA.4.106]

Description

Two photograph albums relating to Tibet:

REMLA.4.106 large album with a green leather cover with a red fabric spine with 'Photographs' embossed in gold on the front cover, belonging to Colonel Arthur Moffat Lang Companion, Order of the Bath (C.B.) who served with the Bengal Sappers and Miners from

1852 to 1888. The photographs are taken along the Hindustan-Tibet Road during an expedition which took place in 1863-1864, but overall the album seems to cover a date range of 1860-1875. The album was presented to the museum by his grandson in 1980.

REMLA.5.23 album with a green leather cover with 'TIRAH 1897-8' and 'TIBET 1903-4' in gold on the spine, containing photographs taken during these two campaigns. Each campaign has its own title page: 'Photographs of the Tirah Expedition 1897-98' and 'Photographs of Tibet Mission Force 1903-04'. There are two images mounted per page, framed by a white line border with a handwritten caption below. The section on Tibet also has a map cut out from a newspaper next to the title page. The penultimate page has three oval drawings or caricatures of 'My Officers'. The album belonged to 'In. Pensioner J. H. White' [In Pensioner, someone who lived at the Royal Hospital Chelsea] and was presented to the museum by his son in 1967.

Notes

REMLA.4.106:

Following a research visit in January 2015, Dr Clare Harris, Professor in Visual Anthropology and Curator for Asia, Pitt Rivers Museum, identified some of the images in this album as well known photographs taken by Samuel Bourne (1843-1912). Bourne was a British photographer who set up Bourne and Shepherd whilst in India. For example, the image of 'Cashmere' is captioned elsewhere as the 'Bridge on the Marqual Canal, Cashmere' 1865 and another as 'Dhul Canal below Chunar, Kashmir', 1863/1867. On closer inspection, another print is labelled in the bottom left hand corner with 'Bourne 63'.

There are a mixture of different sized prints in this album, some are numbered and have faint handwritten captions which correspond to a separate handwritten index which is torn and some parts are now illegible; others are obviously commercial prints. The album seems to have been constructed to reflect the progress of the expedition. Construction of the Hindustan to Tibet road started in 1850-51, from Kalka in the plains to Shipkee in Chinese territory (Tibet).

In a memoir to Colonel Arthur Moffat Lang printed in the Royal Engineers Journal in October 1916, it described how in 1863 Lang 'was appointed to the Hill Roads Division, Simla [...] When making the road from Simla into Thibet, to open up traffic with China, the path had to be carried in places along the face of vertical cliffs in gorges thousands of feet deep.' (p.167-168) The description of the building the road continues, and ends with the following statement: 'It required a good head to superintend all the overhanging work, and no better man than Arthur Lang could have been found for the job.' (p.168)

Production information:

Place: Tibet, Asia
India, South Asia
Pakistan, South Asia
Afghanistan, Asia

Date: c. 1860-1904

Materials: Photographic prints
Albumen print

Condition assessment

Purpose: curatorial comment

Condition: Fair

Date: 2014-06-09

Location

In storage : 2014-05-01 :

Name Associations

The Royal Engineers
Lang, Arthur Moffat, Colonel
(1832-1916)

Type

regiment/service
personal name

Note

Bengal Sappers And Miners (1852-88). Companion, Order of the Bath (C.B.) His memoirs were published in the Royal Engineers Journal in October 1916.

White, J. H., 1897-1904 (fl.)

personal name

Chelsea 'In' Pensioner, Royal Hospital Chelsea

Bourne, Samuel (1834-1912)

personal name

Associations

Younghusband Mission to
Tibet (1903-1904)
Tirah Expedition (1897-1898)
Hindustan to Tibet Road

Type

event
event
place

Note

Other numbers:

Number

779 (54) "1860/75"
H2
954.1 "1897/8"
951.5 "1903/4"
D38
I. 213

Originator

Date

Bibliographic references

Schaw, H., 1860, 'Notes on Photography'. In Papers on subjects connected with the duties of the Corps of Royal Engineers, new series, Vol. IX, 108-128

Memoir: Colonel Arthur Moffat Land, C.B., R.E. By J.W.S (With Photo) The Royal Engineers Journal, October 1916, Vol. XXIV. No. 4., pp.165-169