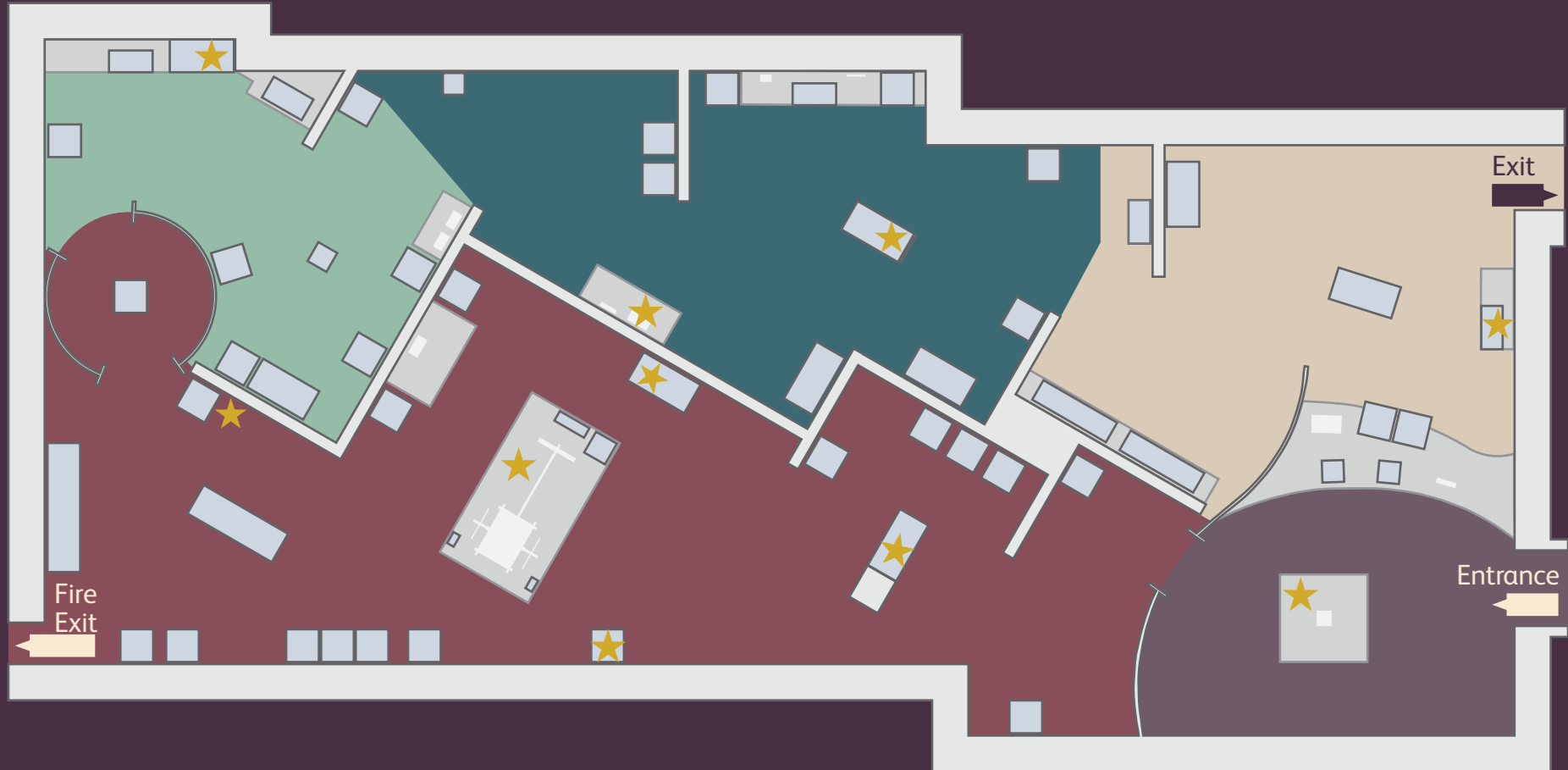
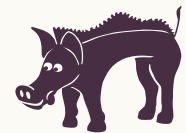


Schools trail



- Who were the Celts?
- A connected Europe (450–150BC)
- The impact of Rome (200BC–AD250)
- A new Christian world (AD250–1000)
- Rediscovery and revival (AD1500–today)

Meet Blewog the boar!



Track him down in ten places around the exhibition and complete his challenges to discover some of our favourite object stories.