

daw



National Museums Scotland is one of the leading museum organisations in Europe. Millions of visitors enjoy our four museums each year and we care for one of the most diverse collections in the world. These collections enable us to explore, debate and celebrate our nation and the world around us.

National Museum of Scotland, Edinburgh
National War Museum, Edinburgh Castle
National Museum of Flight, East Lothian
National Museum of Rural Life, East Kilbride

Support Scotland's National Museums

We rely on your donations to care for Scotland's national collections and keep many of our inspiring events and experiences free. Can you support us by becoming a Member or making a donation today? Thank you.

www.nms.ac.uk/supportus
 or text **NMOS16 £3 to 70070** to donate £3

Do more with Membership

Membership starts from just £39 a year and gives unlimited free entry to our world-class exhibitions, free entry to three museums and a 10% discount on admission to Edinburgh Castle for the National War Museum, plus free or reduced entry to a huge range of special events, a 20% discount in our cafés and 10% off in our shops.

Join at an information desk today or visit www.nms.ac.uk/membership

National Museums Scotland Scottish Charity, No. SC011130

Keep in touch

Sign up for our e-bulletins at: www.nms.ac.uk/signup



Please recycle

If you have finished with this map and do not wish to keep it, please return it to an information desk.

Wi-Fi www.nms.ac.uk



July 2016

General information



Information desks

Information desks are located in the Entrance Hall, Tower Entrance and at Exhibition Gallery 1.



Cloakroom

In the Entrance Hall on Level 0.

Access

There are lifts to all floors, adapted toilets and wheelchairs for loan from the information desks.

Induction loops are in place at the information desks and in the Auditorium. 'Hearing Helper' radio aids are available for tours – please ask at the Entrance Hall information desk.

Special tours, handling sessions for visually impaired visitors or a BSL interpreter can be arranged in advance. Call **0300 123 6789** or email tours@nms.ac.uk

Registered and identifiable assistance dogs are welcome.

Photography

Please feel free to take photographs in the museum and to share them on social media. If you would like to use a tripod, any special lighting, or to take commercial photographs, please ask at an information desk. No photography is allowed in special exhibitions.

Schools and Tours

For more information about visiting with a school party email schools@nms.ac.uk or to organise a group tour email tours@nms.ac.uk

Eating and shopping



Balcony Café, Level 3, 10:00–17:00

Relax in our café with drinks, snacks, home-baking and light meals.

Museum Brasserie, Level 0, 10:00–17:00

Our brasserie serves light and main meals featuring locally sourced produce, freshly prepared throughout the day. For reservations call 0131 247 4040.



Tower Restaurant, Level 5, 10:00–23:00 (last reservation)

Acclaimed Scottish cuisine and skyline views. Open all day for lunch, afternoon tea and dinner. For reservations call 0131 225 3003 or visit www.tower-restaurant.com

Picnics, Level 0

Our group space at the rear of the Entrance Hall is available at weekends and during school holidays for picnic lunches – please check with staff.

Please do not eat or drink in the museum galleries.

Shops

Why not take home a reminder of your visit? Our shops feature an extensive range of Scottish gifts, souvenirs and jewellery, as well as cards, toys and books.

- Entrance Hall, Level 0
- Tower Entrance, Level 1
- Exhibition Gallery 1 foyer, Level 3

You can also shop online at www.nms.ac.uk/shop

For families



Family events

Our family events programme is full of fun and surprises. Check the information screens, pick up a What's on leaflet or ask at an information desk.

Family Trails

For a different way to explore the galleries, pick up one of our free trails from the information desks.

Imagine, World Cultures, Level 1

This interactive gallery especially for families with young children offers a chance to make music, tell stories and create art.

Adventure Planet, Natural World, Level 5

In our interactive nature gallery children can try the dino-dig, dress up to survive extreme environments and explore hands-on nature activities.



Discovery Zones, Scotland galleries, Levels -1, 1, 3, 5

Play games, solve puzzles and dress up as characters from Scottish history.

Science and Technology galleries, Levels 1, 3, 5

The new galleries are full of interactive displays and hands on activities, from the hot air balloon challenge in *Explore* to the giant hamster wheel in *Energise*.

Pushchairs and baby changing

Folded pushchairs may be left in the cloakroom in the Entrance Hall (£1). There are baby changing facilities on all floors (not Level 6).

Enhance your museum experience

Free online experiences for you to enjoy during and after your visit.

Museum WiFi

Use our free public WiFi to explore our collections during your visit.



Museum Highlights app

Discover the National Museum of Scotland with interactive maps, highlights from our collections and information about our historic building.

Available in English, French, German, Spanish, Italian, Chinese and Polish.

Free to download from iTunes or Google Play.

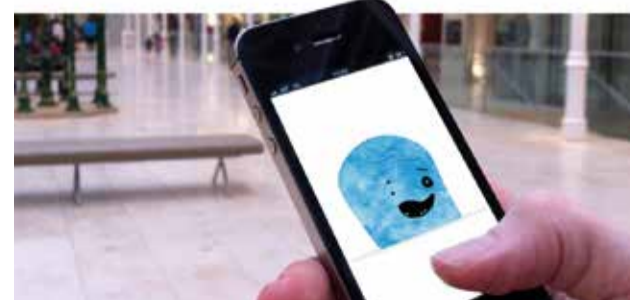
Visit www.nms.ac.uk/apps

Mode – A fashion guide on your phone

Bring the museum's wardrobe to life with *Mode*, our portable fashion guide. Discover everything from sumptuous fabrics and bespoke craftsmanship to design inspiration and fashion history.

Available on mobile, tablet and desktop.

Visit www.nms.ac.uk/mode



GEN – Your interactive museum pet

Play our *GEN* game made in partnership with Aardman Animations. Create and care for your very own digital creature using objects from our Science and Technology galleries. How long can you keep your Gen alive?

Play on mobile, tablet and desktop.

Visit www.nms.ac.uk/gen

Welcome

This map will help you with practical information and highlights some of our favourite objects. Just ask our **Visitor Experience Team** throughout the galleries if you need more information.

The *Discoveries* gallery (Level 1) is a great place to start your visit. Here you can meet some of the Scots whose ideas, innovations and leadership took them across the world.



Throughout the rest of the museum our world-class collections will take you on a journey through the history of Scotland, the wonders of nature and diverse cultures from around the globe. Discover game-changing scientific breakthroughs and marvel at exquisite art, design and fashion from across the centuries. From the tiniest creatures to cutting edge spacecraft, and ancient times to the present day, there are thousands of stories to discover.

You can use this map to find your own path or, if you prefer a digital experience, download our Museum Highlights app. If you're visiting with children, pick up a family trail from the information desks.

Our beautiful souvenir guide is available to buy from our shops, information desks and online shop. Use it to enhance your visit or enjoy at home.

Don't miss!

For more information about today's events, talks and current exhibitions, take a look at the information screens in the entrance halls or ask a member of staff.

Special exhibitions

Discover our programme of special exhibitions, which reveal even more of our collections and bring amazing treasures to the museum. To find out about exhibitions on today ask a member of staff or see our information screens. Our four exhibition galleries are marked on the map.

Free guided tours

For more insight into our collections join one of our free daily tours with our volunteer guides. Tours last approximately one hour and leave from the meeting point in the Entrance Hall, Level 0.

11:00 Discover the National Museum of Scotland

13:00 Scottish galleries highlights

15:00 Themed tour (please ask for details)

Millennium Clock, Discoveries, Level 1

Don't miss the spectacular Millennium Clock come to life as it chimes every hour from 11:00 to 16:00.

Working machines

Look out for our historic working models, machines and engines which are on display across the galleries.



View from the Roof Terrace, Level 7

Take the lift to the Roof Terrace of the Scotland galleries (access from Level 5) for an unforgettable view of the Edinburgh skyline.

Welcome to the National Museum of Scotland

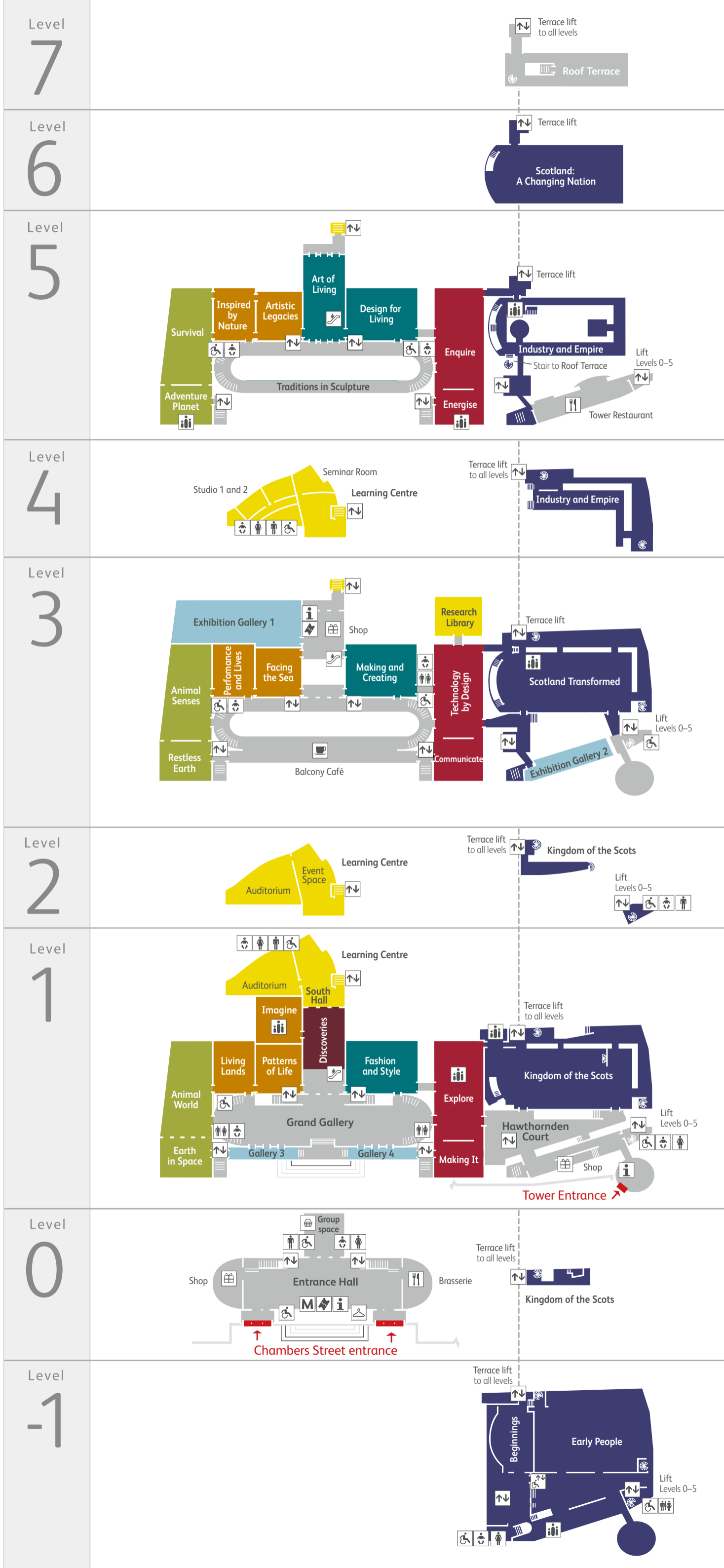
With thousands of amazing objects across dozens of galleries, a lively programme of events, special exhibitions and great places to eat and relax, the museum offers you a world of discovery on every floor.

Explore the museum

- Discoveries**
Discover some of Scotland's greatest achievements and the enormous impact of Scots around the world.
- Natural World**
From outer space to endangered species, explore the diversity and evolution of Planet Earth and the natural world.
- World Cultures**
Remarkable objects reveal how people live their lives and express themselves through art, music and performance.
- Art, Design and Fashion**
Follow an inspirational story of creativity through lavish treasures, exquisite designs and cutting edge fashion.
- Science and Technology**
A world of innovation is illuminated through the scientific discoveries and technological breakthroughs which changed Scotland and the world.
- Scotland**
Explore Scotland's story across the ages through real objects found, made and used in Scotland.
- Learning Centre**
Our hub of inspiring activities for all ages. See the information screens or ask staff for details of what's on.
- Exhibition galleries**
Visit our current special exhibitions – for details of what's on today see the information screens.
- Research Library**
Explore the collections in depth in our Research Library, Level 3.

Key to symbols

- | | | | |
|--|---|--|------------------------|
| | Information desk | | Toilets, female |
| | Tickets/Membership | | Toilets, male |
| | Cloakroom | | Toilet, accessible |
| | Lifts | | Baby changing |
| | Escalator | | Shop |
| | Stairs | | Cafe |
| | Spiral staircase | | Restaurant |
| | Meeting point | | Picnic area |
| | Wheelchair access to Early People, Level -1 | | Specially for families |



Highlights



Victoria Cross of the Piper of Loos
Scotland: A Changing Nation



Ching Ching Survival



Benin Head
Artistic Legacies



Mackintosh Bookcase
Design for Living



CERN accelerating cavity
Enquire



Capra (goat) designed by Pablo Picasso
Making and Creating



Bonnie Prince Charlie's travelling canteen
Scotland Transformed



Maori Waka
Facing the Sea



Harris Tweed suit by Vivienne Westwood
Fashion and Style



Tyrannosaurus rex
Animal World



Dolly the sheep
Explore



Lewis Chessmen
Kingdom of the Scots



Traprain Treasure
Early People