



# The Life Challenge

for upper primary

Name: \_\_\_\_\_

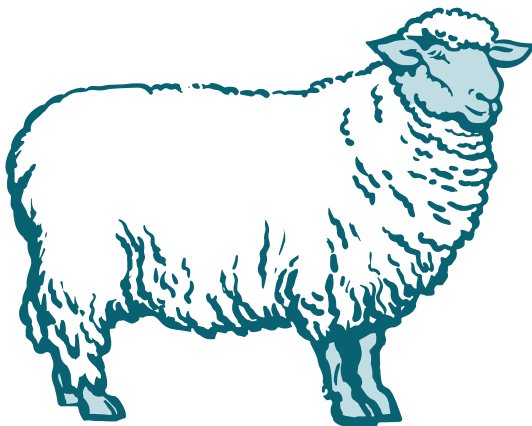


Find out about exciting developments in science and technology and how they have helped improve people's lives. Learn some interesting job facts and find out where to go for more information.

## Start on Level 1 – Explore

Go to the Genetics section

Find Dolly the Sheep



Dolly started life in a laboratory. Scientists worked for a very long time on this project, with several unsuccessful attempts.

Dolly was the only live

\_\_\_\_\_ out of

\_\_\_\_\_ eggs.



Go to the touch screen next to Dolly to find out more about cloning

Dolly was cloned from a Finn Dorset ewe cell. Cloning means developing a genetically identical copy of a living thing.

The first animal to be cloned had webbed feet and could jump and swim. What was it?

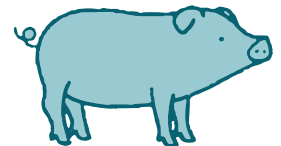
\_\_\_\_\_

Circle the job titles of people who you think were involved with making Dolly.

scientist      surgeon      vet      farm worker

Find the Glowing Pig touch screen

Inside every plant and animal are a set of instructions called genes which are made of a chemical called DNA.



Scientists have been experimenting with animal genes for many years.

Choose one gene to experiment with.

What did you discover?

\_\_\_\_\_

\_\_\_\_\_





## Go to Level 5 – Enquire

### Go to the Inventing Drugs section

#### Find the two brown medicine bottles

It's important to label and package medicines clearly so that they can be used safely. Why is one bottle smooth and the other one ribbed?

---

---

## Go to Level 3 – Technology by Design

### Go to the Engineering Humans section

Scientists are working with engineers and medical professionals to develop cutting-edge technologies which can improve people's lives.

#### Find the moving bionic hand

It was developed by a Scottish company called Touch Bionics.

Test it out.

How many different grips does it have?

---

#### Find the SmartCane in the display case behind you

This object uses technology which can help people who have lost their sight.

Name one other object in this display case which uses technology to assist people living with sight loss.

---

#### Find the drug packaging (in the display case, object 4)

In the past pharmacists used jars with coloured liquids to attract customers.

How have the designers made this packaging appeal to customers?

---

---

Design your own attractive packaging for a medicine. Think about the colours and wording you would use.





## Find the information on taking drugs

Pharmacists make up medicines and provide advice to people on how to take them.

What should you do before taking any medicine?

---

---

Why is it important to do this?

---

---

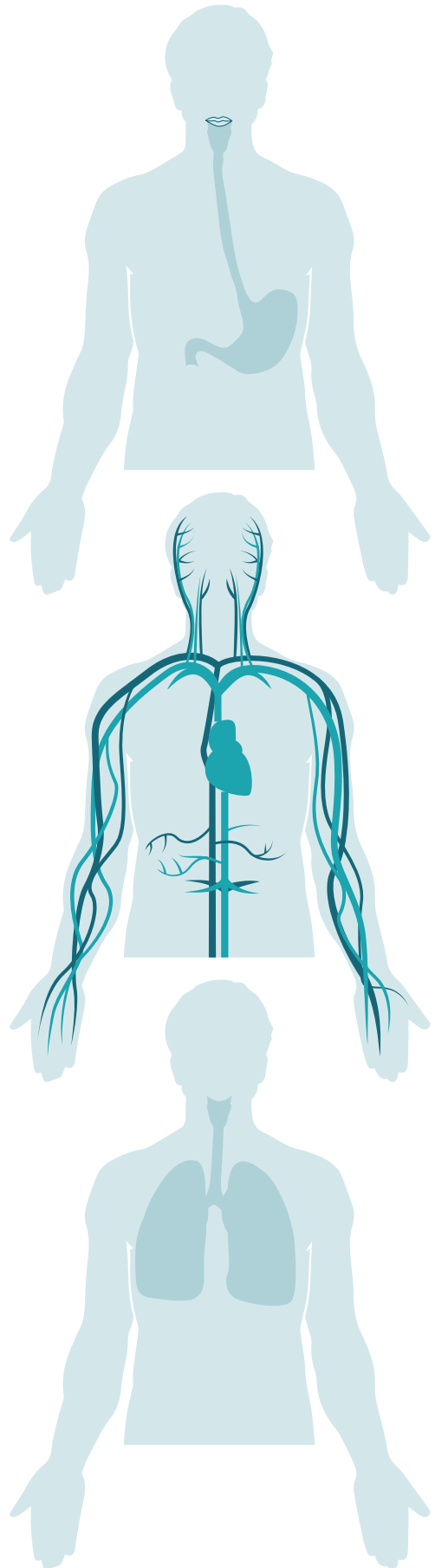
Medicines can be taken in different ways, for example, inhaling, injecting or swallowing.

Match the different ways with the correct area of the body by drawing arrows.

**inhale**

**inject**

**swallow**





## Go to Getting under the skin

3D X-ray images help doctors look inside the body.  
They are called CT scans.

### Find these 3 objects.

They have been used for scanning different parts of the body.

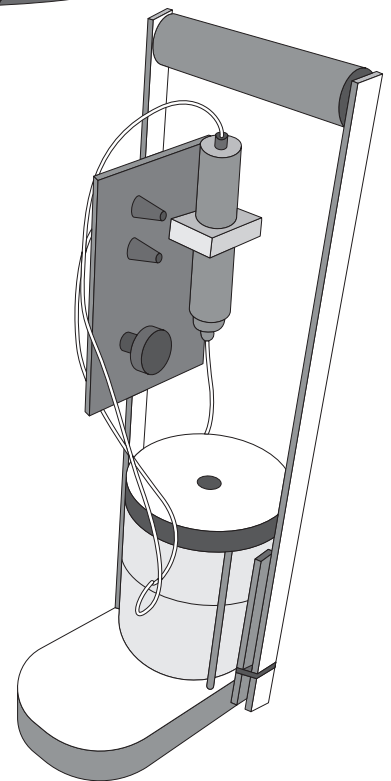
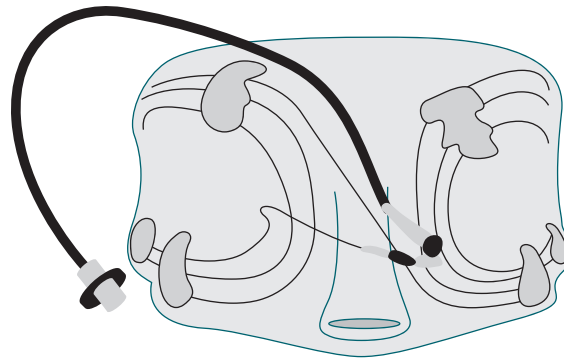
Match the body part with the correct object.



face

eyes

lungs



## So now you know more about: **Life Sciences**

Life sciences is the study of humans, animals and plants and includes areas such as drug discovery and development, medical technology and stem cell research.

Find out more at [www.myworldofwork.co.uk](http://www.myworldofwork.co.uk).

Find out what subjects you need to study at school, what skills you need, how many jobs there may be in the future and lots more.

