



Detail of a carved relief from the temple of Bastet at Tell Basta,
McLean Museum & Art Gallery, Greenock, Inverclyde Council © Museums Galleries Scotland

Ancient Egyptian Collections in Scottish Museums Glasgow and Strathclyde

Scottish Ancient Egyptian Collections Review

East Ayrshire Leisure

Contact Claire Gilmour Claire.Gilmour2@eastayrshireleisure.com

Bruce Morgan Bruce.Morgan@eastayrshireleisure.com

Location of Collections

In storage

Primary contact location:

The Dick Institute
Elmbank Avenue
Kilmarnock
KA1 3BT

Size of collections

>45 objects

Published Information

Online collections: Selection available at www.futuremuseum.co.uk

Online exhibition: *The Journey Beyond*,
<http://www.futuremuseum.co.uk/collections/features/online-exhibitions/the-journey-beyond.aspx>

Collection Highlights

- Islamic foot rasp in the shape of a crocodile, previously labelled as a 'lizard coffin' (c. AD 1800–1900).
- Two artworks by David Young Cameron (1865 –1945), a watercolour depicting the temple at Luxor and an etching showing the fort at the Moqattam Hills, Cairo.

Collection Overview

The collection cared for by East Ayrshire Leisure was initially formed in Kilmarnock as part of the Dick Institute, which opened in 1901 following the provision of funding by Kilmarnock-born industrialist James Dick (1823–1902). Part of the collection was formed in the following years. In 1909 a fire swept through the museum, damaging some objects and destroying others, while many of those that survived became disassociated from their object histories. The museum re-opened in 1911.

The collection is built up primarily of material collected by visitors and tourists to Egypt, including amulets and metal figurines, faience shabtis and small Coptic objects. The collection also includes a number of modern shabtis and scarabs. Due to the deficient historic records, little can be said about the donors. The largest part of the collection was initially lent to the museum by a 'Parker Collection', including several glass vessels said to be excavated in Alexandria, near Cleopatra's Needle, by a Church of Scotland Group.

East Ayrshire Leisure also cares for two artworks by Scottish artist David Young Cameron who visited Egypt in 1908–09; a watercolour depicting the temple at Luxor and a print showing the ‘Turkish fort’ at the Moqattam Hills, Cairo.

Known Donors and Sites Represented

Sites

<i>Site</i>	<i>Excavator/Season</i>	<i>No of Objects</i>	<i>Objects</i>
Alexandria/ Hosh Essa			Glass

Donors

<i>Donor</i>	<i>Category</i>	<i>No of Objects</i>	<i>Objects</i>
Mrs H L Parker (Parker collection)			

Object types

Amulets; Coptic material; figurines; glass; jewellery; modern productions; shabtis; stone vessels; textiles

Key Object Images

Islamic foot rasp in the shape of a crocodile, previously labelled as a ‘lizard coffin’ c. AD 1800–1900



Watercolour by David Young Cameron depicting the temple at Luxor, c. 1908–09



Scottish Ancient Egyptian Collections Review

Kelvingrove Art Gallery and Museum, The Burrell Collection, Glasgow Museums

RECOGNISED COLLECTION OF NATIONAL SIGNIFICANCE TO SCOTLAND

Contact Brian Weightman brian.weightman@glasgowlife.org.uk

General enquiries info@glasgowlife.org.uk

Location of Collections

On display

Kelvingrove Art Gallery and Museum
Argyle Street
Glasgow
G3 8AG

The Burrell Collection
Pollokshaws Road
Pollok Country Park
Glasgow
G43 1AT

NB The Burrell Collection is currently being redeveloped and is due to reopen in Spring 2021.

In storage

Glasgow Museums Resource Centre
200 Woodhead Road
South Nitshill Industrial Estate,
Glasgow
G53 7NN

Size of collections

>4,300 objects

Published Information

Online collections: <http://collections.glasgowmuseums.com/mwebcgi/mweb?request=home>

Collection level description: <https://beta.glasgowlife.org.uk/media/1667/collections-summary-human-history.pdf>

Campbell, C., (1910), *The Sarcophagus of Pabasa in Hamilton Palace, Scotland*.

Dodson, A., 'Duke Alexander's Sarcophagi', *Archiv orientální* 70 (2002).

Collection Highlights

- Granite sarcophagus of Pabasa, chief steward of Nitocris, God's Wife of Amun (c.656–640 BC), formerly in the collection of Alexander, 10th Duke of Hamilton. Originally removed from TT 279 by Giovanni d'Athanas. 1922.86
- Fragmentary limestone stela of the Senenmut, favourite of the female pharaoh Hatshepsut (c.1479–1457 BC). Collected by Rev Colin Campbell. 1913.100.d
- Granite statue of Prince Paraherwenemef, second son of Ramesses II, chief charioteer (c.1279–1213 BC). Collected by Sir William Burrell. 13/83
- Wooden box coffin of a man called Nakht from the excavations of John Garstang at Beni Hassan, Tomb 130 (c. 1985–1797 BC). Donated by the Egyptian Research Students' Association. 1923.33.a.1
- Limestone stela of Penbuy, a workman/guardian in Deir-El Medina (c.1295–1186 BC), dedicated to the goddess Taweret. EGNN.683
- Inscribed limestone pyramidion of the Vizier Nesipakashuty (c.664–525 BC)
- Painted mummy-portrait of a man (c. AD 100–300), excavated by W M Flinders Petrie at Hawara. Originally loaned to the collection by Janet May Buchanan. 36.a.1912

Collection Overview

Glasgow Museums (Glasgow Life) cares for over 4,000 Egyptian objects, dating from the Predynastic period to the beginning of the Islamic period (c. 5500 BC– AD 641), broadly representing all periods of Egyptian civilisation. The collection is housed in two institutions, the Kelvingrove Art Gallery and Museum, and The Burrell Collection. The collection is the third largest in Scotland.

Kelvingrove Art Gallery and Museum opened in 1901, its construction funded by the profits of the 1888 International Exhibition. A large proportion of the Egyptian collection was formed through the work of Janet May Buchanan (1866–1912). Having studied Egyptology, Buchanan went on to support the Egypt Exploration Fund, before founding two Scottish societies to help financially support excavations. The Glasgow and Edinburgh branches of the Egyptian Research Students Account (ERSA) were founded by Buchanan and would remain active into the 1950s. ERSA and the related Glasgow Egypt Society supported excavations conducted by W M Flinders Petrie, the BSAE and other excavators. The Scottish branches of the ERSA were highly successful, leading Buchanan to develop the first Egyptian exhibition in Glasgow in 1912. ERSA also purchased objects from excavators, such as John Garstang (1876–1956), and secured several loans from W M Flinders Petrie (1853–1942). The Museum supported excavations conducted by the EEF directly, receiving many objects in return for their financial support. In 1914, the collection was added to by a donation from Rev Colin Campbell (1848–1931), who also donated objects to The Hunterian (University of Glasgow).

The Burrell Collection was formed as the personal collection of Sir William Burrell (1861–1958), a shipping magnate, philanthropist and antiquities collector. In 1944 he donated his entire collection to the City of Glasgow with specific instructions for its display. The objects he collected were chosen to meet his high aesthetic criteria, and, as a result, the 318 Egyptian objects include notable examples of carved stone stelae, statuary and bronze figurines. This collection includes a Ptolemaic schist block statue of Nesmin (13.233) from the Karnak Cachette, formerly in the collections of Cairo Museum (JE 37868).

The Glasgow Museums collection contains several objects of unique importance in relation to historical figures. These include a fragmentary limestone stela of Senenmut (the favourite of the female king Hatshepsut), a limestone pyramidion of the Vizier Nesipakashuty, a granite statue of Prince Paraherwenemef, and a limestone stela from the village of Deir el Medina dedicated by the guardian Penbuy. One of the most well-known objects in the collection of Kelvingrove Art Gallery and Museum is the granite sarcophagus of Pabasa, chief steward of Nitocris, God's Wife of Amun (c.656–640 BC), formerly in the collection of Alexander, 10th Duke of Hamilton (1767–1852). It was originally removed from Theban Tomb 279 by Giovanni d'Athanasia (1798–1854).

Known Donors and Sites Represented

<i>Site</i>	<i>Excavator/Season</i>	<i>No of Objects</i>	<i>Objects</i>
Abu Roash		12	Ceramics
Abydos	EES/ERA W M Flinders Petrie (1900–02) EES W M Flinders Petrie, Hilda Petrie and Margaret A Murray (1902–03) H Édouard Naville (1908–09) H Édouard Naville and T Eric Peet (1912–13) University of Liverpool John Garstang (1906–09)	>460	Jewellery, ceramics, beads, cosmetics, metal vessels, furniture, coffin fragments, shabtis, tools, stelae, figurines, carved relief, sculpture, stone vessels, scarabs, amulets, mummified animal remains, cartonnage
Alexandria		16	Ceramics, shabtis, metal vessel, sculpture, figurines
Amarna		1	Carved relief
Assyut		1	Funerary figure
Aswan		3	Ceramic, stone, figurines, jewellery
Beni Hassan	University of Liverpool John Garstang (1902–04)	19	Wooden model (boat), coffin, scarab impressions, linen, rope, human remains (skeleton)

Deir el-Bahari	EES H Édouard Naville (donations in 1895,1904 and1907)	92	Ceramics, lithics, leatherwork, beads, faience, carved relief, sarcophagus fragments, figurines
Deir el-Medina		4	Stone stelae, ostrakon
Deir Rifa	BSAE W M Flinders Petrie (1906–07)	1	Soul house
Dendera	EES W M Flinders Petrie (1897–98)	94	Amulets, beads, ceramics, shabtis, carved relief, figurines, sculpture, coins
Dimai (Soknopaiou Nesos)	EES Bernard P Grenfell and Arthur S Hunt (1900–01)		
el-Behnesa (Oxyrhynchus)	EES Bernard P Grenfell and Arthur S Hunt (1903–05)	>139	Jewellery, beads, figurines, dice, sculpture, glass, bronze, cosmetics
el-Riqqa	BSAE Reginald Englebach (1912–13)	4	Ceramics, offering table
el-Shurafa	BSAE W M Flinders Petrie (1911)	6	Jewellery
el-Sheikh Ibada (Antinoë)	EES John De Monins Johnson (1913–14)	27	Linen, leatherwork, tools, cosmetics
Esna	University of Liverpool John Garstang (1905–06) <i>Likely</i>	28	Ceramics, amulets, beads, jewellery
Giza		2	Carved relief, stone sample
Gurob	EES W M Flinders Petrie and Charles Trick Currelly (1903–04)	11	Net sinkers, headrest

Haraga	BSAE Reginald Englebach (1913–14)	>100	Amulets, beads, lithics, ceramics, scarabs, jewellery, musical instruments, carved relief
Helwan		16	Lithics
Heliopolis	BSAE W M Flinders Petrie (1912)	26	Figurines, carved relief, stelae, ceramics, faience, statues
Hu (Diospolis Parva)	EES W M Flinders Petrie (1898–99)	>130	Ceramics, sculpture, figurines, beads, cosmetics
Ihnasya el-Medina (Herakleopolis Magna)		5	Foodstuffs, shabti
Karnak		2	Stela, stone fragment
Kom Abu Billo (Terenuthis)	EES Francis Llewellyn Griffith (1887–88)	1	Carved relief
Kostamneh	University of Liverpool John Garstang (1906)	12	Palettes, jewellery
Lahun	BSAE W M Flinders Petrie (1913–14)	68	Amulets, architectural fragments? , stone vessels, beads, carved relief, sculpture, scarabs
Maghara, Sinai	ERA W M Flinders Petrie (1905–06)	42	Lithics, ceramics
Mahasna	EES Edward Russell Ayrton and William L S Loat (1908–09)	17	Ceramics
Memphis (Mit Rahina)	BSAE W M Flinders Petrie (1913)	10	Sculpture, stone stelae, statues, ceramics
Naqada	University of Liverpool John Garstang	15	Ceramics, bead, seals, jewellery, lithics, ivory

	(1902–04)		
Naukratis	EES	12	Figurines, ceramics, moulds
Reqaqna	ERA John Garstang (1901–02) <i>Likely</i>	1	Stone vessel
Sais		1	Figurine
San el-Hagar (Tanis)	EES W M Flinders Petrie (1884)	7	Plaster casts, amulets, ceramics
Saqqara		>3	Scarab, figurines, shabti
Seila		?	
Serabit el-Khadim	EES W M Flinders Petrie (1904–05)	10	Stone stelae, statues
Tarkhan (Kafr Ammar)	ERA W M Flinders Petrie (1911–13)	>90	Ceramics, linen, jewellery, palettes, stone vessels, funerary figures
Tell Basta (Bubastis)	EES H Édouard Naville (1887–90)	8	Statues, amulets, figurines, shabti
Tell Defenneh (Daphnae)	EES W M Flinders Petrie (1886)	8	Weaponry, bronze
Tell Nabasheh	EES W M Flinders Petrie (1884 or 1886)	5	Shabtis, beads
Tell el-Yahudiyeh	EES H Édouard Naville (1884 or 1887) Or BSAE W M Flinders Petrie (1905–06)	4	Foodstuffs
Thebes (Luxor)	Rev Colin Campbell (pre-1913)	>95	Ceramics, amulets, shabtis, lithics, metal vessels, stone stelae,

	EES (1895, 1907) ERA W M Flinders Petrie (1895–96)		mummified human remains, cartonnage (mummy-case), coffin, statues, figurines, cosmetics, carved relief, funerary cones, sarcophagus
Tuna el-Gebel		2	Amulets
Wadi Sojur	Heywood Walter Seton-Karr (pre-1900)	376	Lithics

Donors

KELVINGROVE

This does not represent a complete list of donors. It is based on details from the 'National Significance Report' produced by Glasgow Museums in relation to their collections.

<i>Donor</i>	<i>Category</i>	<i>No of Objects</i>	<i>Objects</i>
Edinburgh Museum of Science and Art	Institution		Plaster casts from Cairo Museum
Egypt Exploration Society	Archaeology		
Egyptian Research Students Association (ERSA), Glasgow Branch	Archaeology (Affiliated with ERA, BSAE)		
Janet May Buchanan (1866–1912) Nora F Buchanan	Archaeology (Founder of ERSA Glasgow) Ex-Janet May Buchanan Collection		
Rev Colin Campbell (1848–1931)	Religious/Archaeology		
John Galloway			
Alexander, 10th Duke of Hamilton (1767–1852)	Aristocracy	1	Sarcophagus
Lewis Lyons			

Ludovic Mann (1895–1955)	Archaeology		
W M Flinders Petrie (1853–1942)	Archaeology		
Heywood Walter Seton-Karr (1859–1938)	Archaeology		Lithics (likely)

BURRELL

<i>Donor</i>	<i>Category</i>	<i>No of Objects</i>	<i>Objects</i>
Sir William Burrell (1861–1958)	Business (Shipping)	318	Whole collection

Object types

Amulets; basketry; ropes; canopic jars; carved relief; coffins; cosmetics; figurines; funerary figures; faience vessels; foodstuffs; foundation deposits; funerary cones; furniture; glass; jewellery; linen; lithics; leatherwork; metal vessels; mummified animal remains; mummified human remains; musical instruments; ostraca; palettes; papyri; sculpture; statues; sarcophagi; scarabs; sealings; shabtis; shabti boxes; soul houses; stelae; stone vessels; tools; weaponry; wooden models

Key Object Images

Granite sarcophagus of Pabasa. 1922.86



Stela fragment of Senenmut, Karnak, Thebes. 1913.100.d



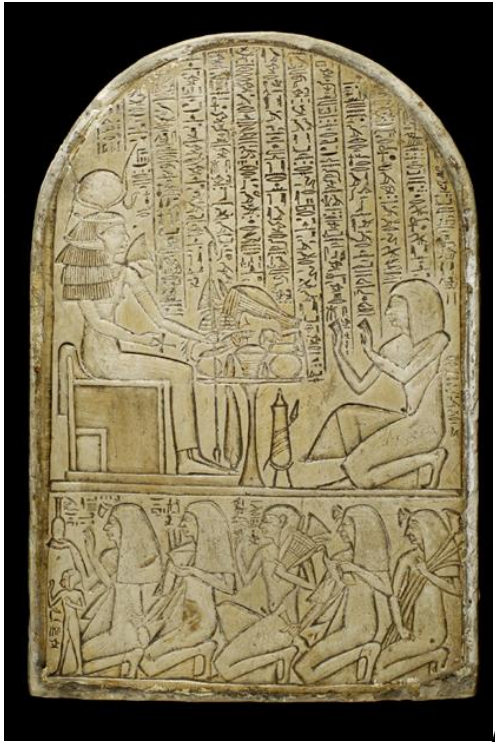
Box coffin of Nakht, Beni Hassan. 1923.33.a.1



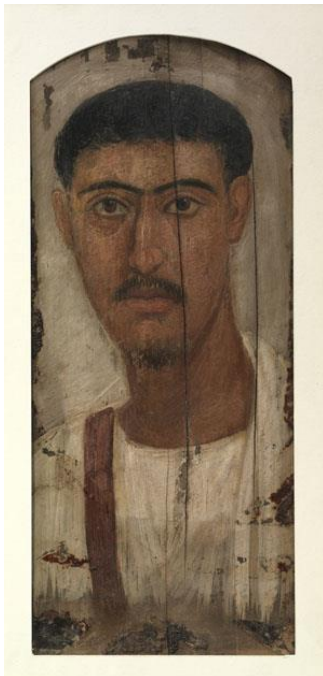
Granite statue of Prince Paraherwenemef. 13/83



Limestone stela of Penbuy, probably Deir el-Medina/Thebes. EGNN.683



Painted mummy-portrait of a man, Hawara. 36.a.1912



Scottish Ancient Egyptian Collections Review

The Hunterian, University of Glasgow

RECOGNISED COLLECTION OF NATIONAL SIGNIFICANCE TO SCOTLAND

Contact Andy Mills andrew.mills@glasgow.ac.uk

General enquiries hunterian-enquiries@glasgow.ac.uk

Location of Collections

In storage/ On display

The Hunterian
University of Glasgow
82 Hillhead Street
Glasgow
G12 8QQ

Size of collections

>1,400 objects

Published Information

Online collections: <http://collections.gla.ac.uk/>

A brief description of Rev Colin Campbell's collection can be found here:

<https://www.gla.ac.uk/hunterian/collections/collectionssummaries/archaeologyandworldculture/s/archaeology/reverendcolincampbell/#d.en.263830>

McDowell, A., (1993), *Hieratic Ostraca in the Hunterian Museum Glasgow (The Colin Campbell Ostraca)*, Oxford: Griffith Institute.

Collection Highlights

- Decorated 26th dynasty coffin of Lady Shepenhor (Thebes, c.600BC) donated to the museum by Joshua Heywood in 1820.
- Collection of life-size tomb facsimiles made by Rev Colin Campbell in the Theban West Bank.
- Important collection of 73 ostraca donated to the museum by Rev Colin Campbell.
- Cast of the Rosetta stone presented to the University of Glasgow by the Marquis of Douglas on 16 March 1803.

Collection Overview

The Hunterian, Scotland's oldest public museum, has a sizeable collection of ancient Egyptian objects, alongside its Roman, Cypriot and Near Eastern collections. The Egyptian section of this collection comprises over 1,400 objects, ranging from amulets to large stone stelae. Founded by a bequest from William Hunter (1718–1783) in 1783, the museum

opened in 1807. Before this date, the first known Egyptian object in the collection of the University of Glasgow was a cast of the Rosetta Stone, presented to the University in 1803 by Alexander, Marquis of Douglas, later the 10th Duke of Hamilton (1767–1852). The title, Marquis of Douglas was an honorific title given to the son of the current Duke of Hamilton, which at this time would have been Archibald, 9th Duke of Hamilton (1740– 1819).

The museum went on to support excavations in Egypt financially. Primarily this meant the support of the Egypt Exploration Society but also the British School of Archaeology in Egypt, John Garstang and others. A proportion of the collection was also sourced from the Glasgow Egypt Society and the associated Janet May Buchanan (1866–1912) collection, of which Glasgow Museums received a share (for more on Buchanan, see the collections overview for Glasgow Museums). University of Glasgow Archives Services holds the records of the Glasgow Egypt Society (1912-1939) whose aim was to ‘promote the interests of excavation and research in Egypt’.

As the museum is part of the University of Glasgow, a sizeable number of objects were donated to the collection by academics in other parts of the institution. In the 20th century the Hunterian acquired the internationally important collection of ostraca and tomb facsimile paintings from the collection of Rev Colin Campbell (1848–1931), who donated the material to his *alma mater*. The museum also purchased nearly 200 objects from the collection of Rev John Garrow Duncan (1872–1951) in the early 1930s, which likely originated from his excavation work with W M Flinders Petrie (1853–1942). One of the highlights of the current display is the highly decorated coffin of the Lady Shepenhor (c.600 BC), which was donated to the Museum by Joshua Heywood in 1820.

Known Donors and Sites Represented

Sites

<i>Site</i>	<i>Excavator/season</i>	<i>No of Objects</i>	<i>Objects</i>
Abydos	BSAE	44	Ceramics, stone vessels, beads, stone stelae, tools, cosmetics
Amarna	EES	272	Coin, tools, ceramic, jewellery, carved relief, moulds, faience
Beni Hassan	University of Liverpool John Garstang (1902–04)	36	Ceramics
Dahshur		2	Jewellery
el-Gerzeh	BSAE W M Flinders Petrie (1910–11)	22	Ceramics, lithics, beads, shabti
Esna		1	Lithic

Faiyum	Gertrude Caton-Thompson	32	Lithics, ostrich shell
Gurob	BSAE Guy Brunton and Reginald Englebach (1920)	57	Cosmetics, ceramics, scarabs, beads, jewellery
Hawara	BSAE W M Flinders Petrie (1910–11)	6	Basketry, linen
Helwan		2	Lithics
Mazgunah	BSAE W M Flinders Petrie (1910–11)	2	Scarabs
Naukratis		2	Weapons
Saft el-Henna	BSAE John Garrow Duncan and W M Flinders Petrie (1905–06)	24	Jewellery, beads, Amulets
Sedment	BSAE W M Flinders Petrie (1920–21)	53	Shabtis, cosmetics, furniture, coffin fragments, beads, tools, foodstuffs
Sheikh el-Tainai		15	Lithics
Thebes	Rev Colin Campbell	18	Papyri, funerary cones, ostraca
Thebes/Luxor		10	Statue of Sekhmet, beads, tools, lithics
Valley of the Kings		3	Stone fragments
Wadi Halfa		2	Lithics

Donors

<i>Donor</i>	<i>Category</i>	<i>No of Objects</i>	<i>Objects</i>
British School of Archaeology in Egypt	Archaeology	195 (56 described as via Flinders Petrie)	Lithics, stone stelae, ceramics, tools, weapons, cosmetics, scarabs, jewellery, beads, shabtis, furniture,

			cartonnage (mummy-case)
Glasgow Egypt Society	Archaeology (affiliated with EES)	341	Lithics
University of Glasgow Geology Department	Institution	3	Fragments of painted and carved relief said to be from the Valley of the Kings
Thomas Barclay (1792–1873)	Religious/Academic (Minister and University of Glasgow Principal)	78	Shabtis, scarab, ceramic, cosmetic, beads
Marquis of Douglas, Alexander, 10th Duke of Hamilton (1767–1852)	Private (Aristocracy)	1	Rosetta Stone cast
Andrew Henderson Bishop (1874–1957)	Business/Private (Archaeological collector)	152	Lithics, beads, jewellery, cosmetics, amulets, shabtis, scarabs
Janet May Buchanan (1866–1912)	Archaeology (Founder of ERSA)	156	Figurines, amulets, weapons, jewellery, shabti, ceramic, mummified human remains
Elizabeth Alexander Miss E F Buchanan	Ex-Janet May Buchanan Collection		
Thomas Brown, of Lanfine and Waterhaughs (1774–1853) aka Lanfine Collection	Medical/academic (Botanist, University of Glasgow)	13	Sekhmet statue, shabtis, faience
Rev Colin Campbell (1848–1931)	Religious/Archaeology (Minister and archaeologist)	96	Papyri, funerary cones, ostraca
Gertrude Caton-Thompson (1888–1985)	Archaeology	33	Lithics
Frederick Eck (1806–1884)	Academic (Ethnographic collector)	10	Shabtis, papyrus, statuette,

			mummified animal remains
John Garstang (1876–1956)	Archaeology	36	Ceramics, coffin fragments
Joshua Heywood (fl.1820)		2	Coffin of Shep-en-Hor, mummified human remains
Edward Hindle (1886–1973)	Academic (Zoology University of Glasgow, Curator of Hunterian Museum 1935–1943)	1	Stone stela
Professor Lennie	Academic	8	Shabti, ceramics
William Living		1	Mummified human remains
Professor Milligan	Academic	2	Papyrus, ostrakon
Mrs Mungall		10	Shabtis
Professor William Barron Stevenson (1869–1954)	Academic (Hebrew and Semitic languages)	18	Stone vessel, shabti, beads, amulets
James Stewart (– c.1835) (Williamwood)	Medical	2	Mummified animal remains
John Swinnerton Phillimore (1873–1926)	Academic (Classics/Humanities University of Glasgow)	10	Ceramic, stone vessel, figurine
Janet Walker		5	Ceramic, beads, amulets

Object types

Amulets; basketry; beads; casts; carved reliefs; coffins; coins; faience; figurines; funerary cones; furniture; glass; jewellery; lithics; metal vessels; mummified animal remains; mummified human remains; offering tables; ostraca; papyri; ceramics; palettes; statues; sarcophagi (fragments); scarabs; shabtis; stone stelae; stone vessels; textiles; leatherwork; cosmetics; tools; weapons

Key Object Images

Tomb facsimile made by Rev Colin Campbell



Courtesy of The Hunterian, University of Glasgow

Coffin of Shep-en-Hor (c.600 BC) GLAHM:D.6



Courtesy of The Hunterian, University of Glasgow

Ostraca from the Rev Colin Campbell collection



Courtesy of The Hunterian, University of Glasgow

Cast of the Rosetta stone presented to the University of Glasgow by the Marquis of Douglas on 16 March 1803. GLAHM:D.1



Courtesy of The Hunterian, University of Glasgow

Scottish Ancient Egyptian Collections Review

The McLean Museum and Art Gallery (Greenock), Inverclyde Council

Contact General enquiries wattinstitution@inverclyde.gov.uk

Location of Collections

In storage/ On display

The McLean Museum and Art Gallery,
Watt Institution,
15 Kelly Street,
Greenock,
PA16 8JX

Size of collections

>400 objects

Published Information

Online Collections: <http://mcleanmuseum.pastperfectonline.com/randomimages>

Further details: <https://www.inverclyde.gov.uk/community-life-and-leisure/museum/museum-collections/archaeology/ancient-egypt>

Formation of the collection: <https://www.inverclyde.gov.uk/assets/attach/108/Thomas-L.-Patterson-and-the-McLean-Museum-Collection.pdf>

Collection Highlights

- Large fragment of carved relief from the Great Temple of Bastet at Tell Basta (c. 600–200 BC).
- Cartonnage mummy-case and coffin from Herakleopolis Magna (Ihnasya el-Medina) of An-Ankh-Rat. Excavated by Édouard Naville on behalf of the Egypt Exploration Society (c.945–700 BC).
- First Intermediate Period carved limestone stela from the tomb of Meretkau at Dendera (c.2160–2055 BC).
- Brightly-dyed Coptic boy's tunic from Hawara (c. AD 500–600).

Collection Overview

The McLean Museum has collected in several different fields since it opened in 1876, building upon the work of the Greenock Philosophical Society and its earlier 1816 museum. 98% of the Egyptian collections at the McLean Museum were received from excavations conducted by the Egypt Exploration Society (EES), which the society and museum intermittently supported from 1888 until 1914. The consistency of acquisition makes the collection unique in Scotland. This arrangement was commenced by a member of the society who was also a museum trustee, the chemist Thomas Law Patterson (1842–1915).

His advocacy for local support for the EES drew Amelia Edwards to lecture in the town, whereupon she visited the museum and donated a fragment of linen. Of the notable objects in the collection, the largest is a fragment of carved relief from the temple of Bastet at Tell Basta. This object was distributed to Greenock following assistance from John Scott of the local shipping company Scott's Shipbuilders. The McLean Museum also cares for the wooden coffin and cartonnage mummy-case of An-Ankh-Rat from the excavations of Naville at Herakleopolis Magna, one of only two surviving examples from those that he excavated at this site. The collection contains examples of objects such as ceramics, shabtis, amulets and scarabs in addition to stone stelae and other funerary equipment, covering most of Egyptian history. The collection provides a good selection of objects from many of the most important sites excavated by the Egypt Exploration Fund in the late nineteenth century. The sites include Abydos, Tell Basta, Tanis, Defenna, Deir el-Bahari, Dendera, Hu, Hawara, Herakleopolis Magna, Naukratis and Oxyrhynchus.

Known Donors and Sites Represented

Sites

<i>Site</i>	<i>Excavator/season</i>	<i>No of Objects</i>	<i>Objects</i>
Abydos	EES W M Flinders Petrie (1900–1903)	129	Shabtis, ceramic, wooden coffin elements, foundation deposits
Deir el-Bahari	EES Édouard Naville (1893–96), (1903–07)	18	Tools, foundation deposits, stone sculpture
Dendera	EES W M Flinders Petrie (1897–98)	36	Amulets, stone stela
el-Amra	EES David Randall–Maclver (1900–01)	20	Predynastic ceramics
el-Behnasa (Oxyrhynchus)	EES W M Flinders Petrie (1896–97)	9	Ceramics, cosmetics
el-Hibeh	EES Bernard Grenfell and Arthur Hunt (1902–03)	13	Jewellery, amulets

el-Sheikh Ibada (Antinoë)	EES John de Monis Johnson (1913–14)	5	Jewellery, cosmetics
Hawara	EES W M Flinders Petrie (1888–89)	4	Linen, textiles
Hu (Diospolis Parva)	EES W M Flinders Petrie (1898–99)	22	Predynastic pottery, beads, amulets, cosmetic jars
Ihnasya el-Medina (Herakleopolis Magna)	EES Édouard Naville (1890–91)	2	Coffin, cartonnage (mummy-case)
Naukratis	EES W M Flinders Petrie (1884–85) Ernest Gardner and Francis Llewellyn Griffith (1885–86)	52	Amulets, tools, ceramics
Qarara	EES Bernard Grenfell (1902–03)	2	Leatherwork, cosmetics
San el-Hagar (Tanis)	EES W M Flinders Petrie (1883–86)	12	Amulets, ceramics
Sedment	EES W M Flinders Petrie (1903–04)	1	Coffin lid
Tell Basta (Bubastis)	EES Édouard Naville (1887–89)	1	Carved relief
Tell Defenneh	EES W M Flinders Petrie (1886)	5	Weapons, ceramics
Tell el-Yahudiyeh	EES Édouard Naville and Francis Llewellyn Griffith (1887)	2	Lithics
Tell Nabasheh	EES	9	Ceramics, shabtis

	W M Flinders Petrie (1886)		
Thebes		1	Ceramic
Tukh el-Qaramus	EES Édouard Naville (1886)	2	Shabti, ceramic

Donors

<i>Donor</i>	<i>Category</i>	<i>No of Objects</i>	<i>Objects</i>
Egypt Exploration Society	Archaeology	429	Amulets, cosmetics, weapons, beads, jewellery, foundation deposits, coins, votive, canopic jars, stelae, mummy-masks, moulds, shabtis, stone sculpture
Watt Library	Institution	1	Mummified animal remains
Amelia B Edwards (1831–1892)	Archaeology (Founder of EES)	1	Linen
William Johnstone Marshall (1832– fl.1910)	Medical	2	Mummified animal remains, ceramic
Thomas Law Patterson (1842–1915)	Business (Chemist)	5	Textile, ceramic, scarab

Object types

Amulets; beads; canopic jars; carved relief; ceramics; coffins; coins; cosmetics; foundation deposits; mummy-masks; jewellery; linen; lithics; leatherwork; metal vessels; mummified animal remains; mummified human remains; scarabs; shabtis; stone stelae; stone vessels; textiles; tools; votives

Key Object Images

Carved relief from the Temple of Bastet at Tell Basta (Bubastis) 1987.415



© Museums Galleries Scotland

Cartonnage mummy-case of An-Ankh-Rat 1987.395



Coptic boy's tunic from Hawara 2000.40.1



First Intermediate Period limestone stela from Dendera 1987.401



Scottish Ancient Egyptian Collections Review

Culture NL (North Lanarkshire)

Contact Jenny Noble: noblej@culturenl.co.uk

General enquiries enquiries@culturenlmuseums.co.uk

Location of Collections

In storage

Summerlee Museum of Scottish Industrial Life
Heritage Way
Coatbridge
ML5 1 QD

Other CultureNL sites: North Lanarkshire Heritage Centre, Cumbernauld Museum, Colzium Museum, Kilsyth Heritage, Shotts Heritage Centre

Size of collections

<35 objects

Published Information

Online Collections: <https://www.culturenlmuseums.co.uk> Egyptian material is not currently online

Collection Highlights

- Several dozen ceramic vessels yet to be identified; likely from the excavations of John Garstang (University of Liverpool) at Beni Hassan or Esna.

Collection Overview

Culture North Lanarkshire is known to have one wooden shabti (NLC-1998-773) collected in 1888, originally in the collections of Airdrie Museum, which has not been identified. Archival material at the University of Liverpool records that 42 ceramic vessels were gifted to Airdrie Museum by the archaeologist John Garstang on behalf of the Beni Hassan Excavation Committee in April 1904. This donation was part of his offer of pottery to interested educational institutions as advertised in *The Times* in 1904. These ceramics may have been subsequently confused with other Cypriot material in the museum's collection.

Known Donors and Sites Represented

Sites

Site	Excavator/season	No of Objects	Objects
Beni Hassan or Esna	University of Liverpool John Garstang (1902–06)	42 (not all located)	Ceramics

Donors

<i>Donor</i>	<i>Category</i>	<i>No of Objects</i>	<i>Objects</i>
Mrs Donaldson (Dollar)		1	Shabti
John Garstang	Archaeologist	42 (not all located)	Ceramics

Object types

Ceramics; shabti

Scottish Ancient Egyptian Collections Review

Paisley Museum and Art Gallery, Renfrewshire Leisure

Please Note: Paisley Museum is currently closed for redevelopment, due to reopen at the end of 2022.

Contact Gail Hunter gail.hunter@renfrewshire.gov.uk
Joel Fagan joel.fagan@renfrewshire.gov.uk
General enquiries museums.els@renfrewshire.gov.uk

Location of Collections

In storage

Paisley Museum and Art Gallery/ Paisley: The Secret Collection
9 High Street
Paisley
PA1 2AE

Size of collections

>300 objects

Published Information

R Hunter and S Hunter, *The Egyptian Collection of Paisley Museum*, Renfrewshire Local History Forum (2005), book and CD-ROM.

Most of the objects transferred from the Royal Scottish Museum are published in M A Murray, *Catalogue of Egyptian Antiquities in the National Museum of Antiquities, Edinburgh* (1900), which was also published in the *Proceedings of the Society of Antiquaries of Scotland*, available online here:

<http://journals.socantscot.org/index.php/psas/article/view/6752/6721>

Some of the objects collected by Rhind are published in A H Rhind, *Thebes, Its Tombs and Their Tenants, Ancient and Present* (1862). For the dummy canopic jars from the Rhind Tomb, see page 90, and M Maitland, *The Tomb: Ancient Egyptian Burial* (2017), p48.

Online collections: Not available online

Collection Highlights

- A number of objects, collected by Alexander Henry Rhind, from the former National Museum of the Society of Antiquaries of Scotland, donated by the Royal Scottish Museum in 1955. Including two dummy canopic jars from the Rhind Tomb (c.747–664 BC), a wooden shabti box of the same period likely also from the Rhind Tomb, a wooden-handled bronze mirror (c.1550–1295 BC) and well-preserved papyrus shoes (c.1550–1069 BC).
- Highly decorated fragment of painted wooden coffin (c.1069–715 BC).

- Faience shabti of High Priest of Amun/King Pinudjem I from the Deir el-Bahari Royal cache DB320 (c. 948–978 BC).

Collection Overview

Paisley Museum, Scotland's first municipal museum, opened in 1871 and incorporated collections that had been amassed by the Paisley Philosophical Society since 1808. A major donor was the family of Sir Peter Coats (1808–1890), a partner in the global thread company J&P Coats and a local benefactor, who paid for the construction of the Museum as well as further galleries in 1882. The first Egyptian collections to be housed within the Museum were donated by Thomas Coats (1809–1883) and consisted of a cast of the Rosetta Stone, small scarab amulets and a collection of mummified human remains. Sir Peter's son, Archibald, later donated a small Egyptian collection, including several examples of mummified human remains, that had been collected during Sir Peter's travels in Egypt during the 1860s.

The Museum later supported the excavations of the Egypt Exploration Fund (Society), having received a talk by Amelia B Edwards (1831–1892), entitled *The Story of an Egyptian Mound*, at the annual Philosophical Institution lectures held in the Museum's lecture hall in 1888. The Museum supported the EEF for one season, 1889–90, at which point their subscription lapsed. The core of the collection was added to considerably through the acquisition of material from the excavations of John Garstang (1876–1956) (University of Liverpool) at Beni Hassan, 1902–04.

In 1922, following the discovery of the tomb of Tutankhamun, enthusiasm for Egyptology led the Museum to renew its funding of the EES for another year. The Museum received objects from the city of Amarna, including a good example of blue painted pottery and some fragments of glass as well as a piece of the famous painted plaster floors.

81 objects were donated to Paisley Museum by the Royal Scottish Museum (now National Museums Scotland) in 1955. These include Predynastic pottery excavated by Quibell for the ERA in 1894-5, and various objects excavated and collected in 1855-57 by Alexander Henry Rhind (1833–1863) that were displayed in the National Museum of Antiquities of Scotland.

Known Donors and Sites Represented

Sites

<i>Site</i>	<i>Excavator/Season</i>	<i>No of objects</i>	<i>Objects</i>
Abu Mena		1	Ceramin (pilgrim flask)
Amarna	EES Francis G Newton (1924–25)	>10	Ceramics, glass fragments, amulets, plaster floor
Badari	BSAE Guy Brunton (1925)	1	Lithic

Ballas	ERA J Edward Quibell (1894–95) <i>(via Royal Scottish Museum)</i>	6	Ceramics
Beni Hassan	University of Liverpool John Garstang (1902–04)	28	Ceramics Possibly coffin fragments, Garstang connection uncertain
Faiyum (including Qasr el-Sagha)	BSAE Gertrude Caton-Thompson (1924–25)	8	Lithics, ceramic
Giza		1	Funerary figure
Lahun	W M Flinders Petrie ? <i>Uncertain</i>	1	Basketry
Saqqara	Alexander Henry Rhind (1855–56)	1	Bronze figurine
Thebes	Alexander Henry Rhind (1855–57)	>10	Iron key, jewellery, scarab, footwear, cosmetics, figurines, funerary figures, shabti box, canopic jars, furniture

Donors

<i>Donor</i>	<i>Category</i>	<i>No of Objects</i>	<i>Objects</i>
Royal Scottish Museum	Institution	81	Ceramics, canopic jars, bronze figurines, funerary figures, shabtis, cartonnage, tools, jewellery, cosmetics, furniture, footwear
British School of Archaeology in Egypt via Richard Woollett	Archaeology Dealer	>8	Lithics
Egypt Exploration Society	Archaeology	>75	Glass, faience, scarabs, beads, plaster floor

Archibald Coats (1818– fl.1897) (Son of Sir Peter Coats)	Business (local thread mill owners)	>10	Mummified human remains, cosmetics, scarab, shabti, coffin fragments, funerary figures
Thomas Coats (1809–1883)	Business (local thread mill owners)	2	Mummified human remains
John Garstang (1876–1956) (Beni Hassan Excavation Committee)	Archaeology	28	Ceramics
Leonard Gow (1859–1936) Via John Neilson Institute	Academic (Medical) Institution	2	Canopic jar lids
Edward Keppy	Military	11	Bronze, shabti, human remains, coffin fragments, textiles
Mrs W D Lang		3	Jewellery, scarab
T A Melville		1	Tool
James Wandrum		2	Jewellery, shabti, beads
Richard Woollett (fl.1960)	Dealer	38	Bronze, cosmetics, lithics, funerary figures

Object types

Amulets; basketry; beads; bronze; canopic jars; coffin fragments; cosmetics; cartonnage; coins; lithics; glass; jewellery; figurines; footwear; funerary figures; mummified animal remains; mummified human remains; ceramics; scarabs; shabtis; shabti box; textiles; tools; weapons; modern productions; stone vessels.

Key Object Images

Limestone dummy canopic jars (c. 700 BC) excavated in the Rhind Tomb at Sheikh Abd el-Qurna, Thebes by Alexander Henry Rhind. 1955.477-8



Faience shabti of High Priest of Amun/King Pinudjem I (c. 948–978 BC)



Papyrus shoes, excavated by Alexander Henry Rhind (c.1550–1069 BC). 1955.428



**Highly decorated fragment from the base of a painted wooden coffin (c.1069–715 BC).
L13**

