

Welcome to the National Museum of Scotland

With thousands of amazing objects across dozens of galleries, a lively programme of events, special exhibitions and great places to eat and relax, the museum offers you a world of discovery on every floor.

Explore the museum

- Scotland**
Explore Scotland's story across the ages through real objects found, made and used in Scotland.
- World Cultures**
Remarkable objects reveal how people live their lives and express themselves through art, music and performance.
- Natural World**
From outer space to endangered species, explore the diversity and evolution of Planet Earth and the natural world.
- Learning Centre**
Our hub of inspiring activities for all ages. See the information screens or ask staff for details of what's on today.
- New galleries – open 2016**
We are creating 10 new galleries to showcase our decorative art, design, fashion, science and technology collections.
- Exhibition galleries**
Visit our current special exhibitions – for details of what's on today see the information screens.

Getting around

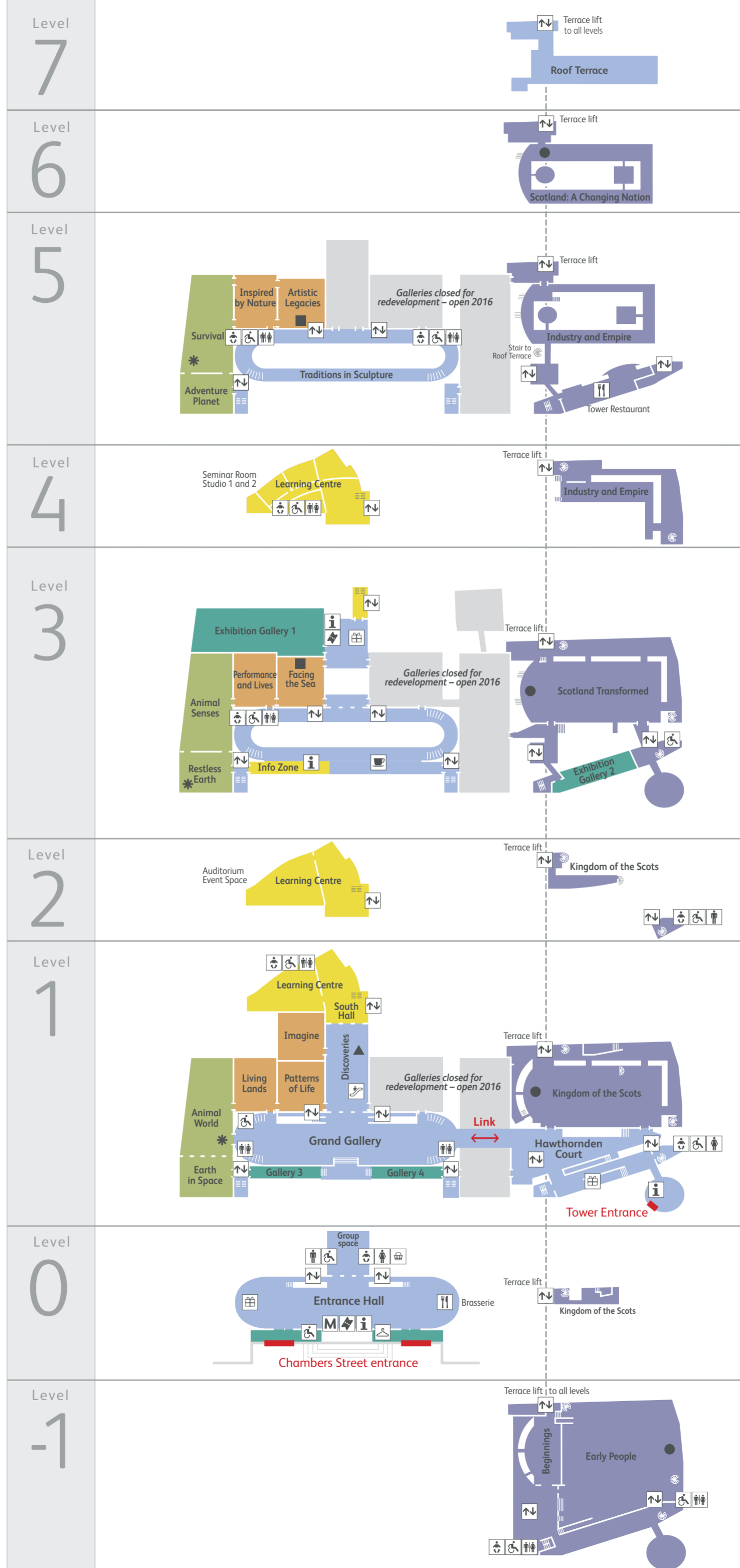
Level 1 link



We are transforming your museum, so some of the routes between galleries have changed. To travel between the Grand Gallery (all levels) and the Scotland galleries, please use the link on Level 1.

Key to symbols

- | | | | |
|--|--------------------|--|--------------------|
| | Information desk | | Toilets, female |
| | Tickets/Membership | | Toilets, male |
| | Cloakroom | | Toilet, accessible |
| | Lifts | | Baby changing |
| | Escalator | | Shop |
| | Stairs | | Cafe |
| | Spiral staircase | | Restaurant |
| | Meeting point | | Picnic area |



Highlights

● **Piper Laidlaw Medal**
A Victoria Cross awarded to Daniel Laidlaw for piping his comrades 'over the top' in the Battle of Loos, 1915.
> *Scotland: A Changing Nation*



■ **Benin Head**
19th century commemorative head of a king from the Benin Kingdom in Nigeria.
> *Artistic Legacies*



* **Ching Ching**
Our much-loved giant panda from London Zoo was a gift from the Chinese Government in 1974.
> *Survival*



* **Amethyst geode**
The spectacular one-tonne geode was formed in Brazil about 130 million years ago.
> *Restless Earth*



● **Bonnie Prince Charlie's travelling canteen**
An elaborate silver travelling canteen associated with Prince Charles Edward Stewart.
> *Scotland Transformed*



■ **Waka**
This Maori canoe from the 1820s has been restored and combined with a new acrylic stern post by artist George Nuku.
> *Facing the Sea*



▲ **Sir Alexander Fleming's Nobel Prize Medal**
Awarded jointly in 1945 for the discovery of penicillin and its curative effect in various infectious diseases.
> *Discoveries*



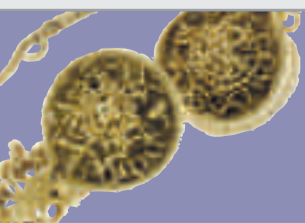
* **Tyrannosaurus rex**
Meet the 12-metre-long, life-sized skeleton cast of a *T. rex*, 65 million years after it walked on the earth.
> *Animal World*



● **Lewis Chessmen**
Found on the island of Lewis in 1831, they are one of Scotland's most significant and enigmatic archaeological discoveries.
> *Kingdom of the Scots*



● **Iron Age torcs**
Exquisite Iron Age craftwork including four gold neck ornaments, part of a hoard found at Blair Drummond.
> *Early People*





www.nms.ac.uk

September 2014
National Museums Scotland
Scottish Charity, No. SC01 130

National Museum of Scotland, Edinburgh
National War Museum, Edinburgh Castle
National Museum of Flight, East Lothian
National Museum of Rural Life, East Kilbride

Our museums

If you have finished with this map and do not wish to keep it, please return it to an information desk.

Recycle



Sign up for our e-bulletins at:
www.nms.ac.uk/signup

Keep in touch

www.nms.ac.uk/membership

Members go free
Membership starts from just £35 a year and gives free access to our world-class exhibitions, free entry to three museums with 10% discount on admission to Edinburgh Castle for the National War Museum, free or reduced entry to a huge range of special events, 20% off in our cafes and 10% off in our shops. Join at an information desk today or visit

increase access to our collections.

If you enjoyed your visit you can make a donation or join as a Member. The money we raise helps

Support us

National Museums Scotland is a registered charity.

Get involved

National Museum of Scotland



Map



Welcome

This map will get you started on your visit with practical information and some of our favourite objects. Just ask our Visitor Services Assistants in the galleries if you need more information.

Information desks
Information desks are located in the Entrance Hall, Tower Entrance and at Exhibition Gallery 1. The Info Zone on Level 3 is the place to find out more about our collections, as well as access to our Research Library.

Pushchairs and baby changing

Folded pushchairs may be left in the cloakroom in the Entrance Hall. There are baby changing facilities on most floors.

Cloakroom

In the Entrance Hall on Level 0.

Access

There are lifts to all floors, adapted toilets and wheelchairs for loan.

Induction loops are in place at the Information Desks and in the Auditorium and Lecture Theatre. 'Hearing Helper' radio aids are available for tours – please ask at an Information Desk.

Special tours, handling sessions or for visually impaired visitors a BSL interpreter can be arranged in advance on 0131 247 4041 or tours@nms.ac.uk
Registered and identifiable assistance dogs are welcome.

Photography
Please feel free to take photographs in the museum – and to share them with us on social media. If you would like to use a tripod, any special lighting, or take commercial photographs, please ask at an information desk. No photography is allowed in special exhibitions.

Eating and shopping



Balcony Café, Level 3, 10:00–17:00
Relax in our Balcony Café with drinks, snacks, home-baking and light meals.



Museum Brasserie, Level 0, 10:00–17:00
Our Museum Brasserie serves light and main meals featuring locally sourced produce, freshly prepared throughout the day. For reservations call 0131 247 4040

Tower Restaurant, Level 5, last reservation 23:00
Acclaimed Scottish cuisine and skyline views. Open all day for lunch, afternoon tea and dinner. For reservations call 0131 225 3003 or visit www.tower-restaurant.com



Picnics, Level 0
Our group space at the rear of the Entrance Hall may be available for picnic lunches. Please check with staff for availability.



Shops

Why not take home a reminder of your visit? Our shops feature an extensive range of imaginative gifts, souvenirs, toys and books.

- Entrance Hall, Level 0
- Tower Entrance, Level 0
- Exhibition Gallery 1 foyer, Level 3

You can also shop online at www.nms.ac.uk/shop

For families



Imagine

This interactive gallery especially for families with young children offers a chance to make music, tell stories, dress up and create art.

Adventure Planet

In our interactive nature gallery children can try the 'dino-dig', dress up to survive extreme environments and explore hands-on nature activities.

Discovery Zones, Scotland galleries, Levels –1, 1, 5
Play games, solve puzzles and dress up as characters from Scottish history.

Family events

Our family events programme is full of fun and surprises. Check the information screens, pick up a *What's on* leaflet or ask at an Information Desk.

Family Footprint Trails

For a new way to explore the galleries, pick up one of our free trails from the Info Zone on Level 3.

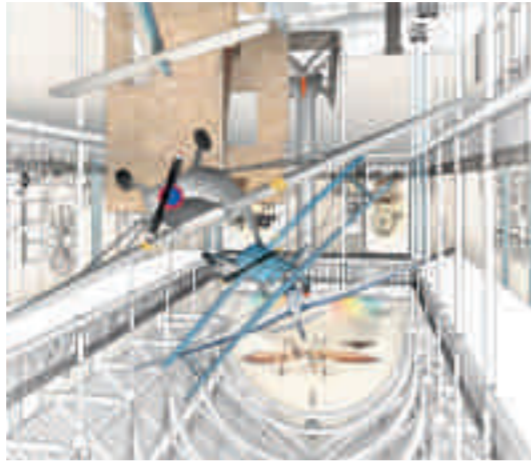
School and group visits

For more information about visiting with a school party or group please call 0131 247 4041.

Transforming your museum

Much of the National Museum of Scotland has been transformed in recent years through an £80 million Masterplan. We are now working on a further ten spectacular new galleries, revealing more of our internationally important collections, prepared throughout the day. For reservations call 0131 247 4040

The new galleries will showcase extraordinary collections of decorative art, design, fashion, science and technology. Housing more than 3,500 objects, the galleries will champion excellence and innovation providing inspiration for visitors, scientists, engineers, artists and designers of today and tomorrow.



Pick up a *Transforming your museum* leaflet or ask a member of staff for more information. Check www.nms.ac.uk/masterplan for news about the project or to sign up to our email newsletter. You can also follow our updates on Facebook or Twitter.

Special exhibitions



Game Masters

Fri 5 Dec 2014–Mon 20 Apr 2015
Exhibition Gallery 1, Level 3
Adults £10/£8, Child £6/50 (under 5s free), Family £28, Members free

Featuring over 100 playable games, *Game Masters* showcases the work of more than 30 leading videogame designers.

The exhibition explores the development of videogames through interactive, interviews with game designers, and rare original game artwork, as well as looking forward to how independently produced games are leading the way in design, aesthetics and game play.

An exhibition created by the Australian Centre for the Moving Image, Melbourne, supported by the Victorian Government.

© SEGAs. All rights reserved.



Australian Centre for the Moving Image

Donations welcome